



COUNCIL FOR
WATERSHED HEALTH



ANNUAL REPORT

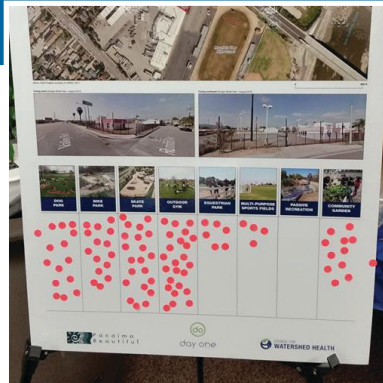
20¹⁶₁₇

OUR IMPACT

Watershed Coordination & Capacity Building

Water Foundation Community Toolkit

CWH continued developing its planning tool kit for community-based efforts to implement multi-benefit stormwater capture projects. With support from the Water Foundation, CWH teamed with local partners Pacoima Beautiful and Day One to build technical capacity in underserved community-led efforts for distributed stormwater capture projects in the greater Los Angeles region. Many communities are unaware of the significance multi-benefit water projects bring to their local neighborhoods. These benefits range from increased green and open spaces, improved air quality, pedestrian safety and flooding risk. This year, both community partners received funding for their identified projects, the Bradley “green” Alley in Pacoima and Merced Ave Green Street in South El Monte, demonstrating the success of this partnership model for technical assistance and community engagement.



Community Dialogues

CWH, in partnership with Los Angeles Department of Water and Power, LA Sanitation and OneWater LA, teamed up with six community-based organizations to facilitate local conversations about the importance of green infrastructure and multi-benefit projects. CWH and local partners identify neighborhood residents for training in multi-benefit water projects and outreach. Dialogues are held sharing project success

strategies, answering questions about community priorities and developing communication messages. Local leaders then tour the Elmer Ave and the Elmer Paseo to learn about innovations in the “watershed approach” to managing storm water in their own communities. This project expanded the network of local partners engaged in stormwater advocacy from Pacoima to Downtown LA, South LA and East Los Angeles.

Lower Los Angeles River Revitalization Plan

CWH is a member of the AB530 Lower LA River Revitalization Working Group, serving on the Water & Environment, Community Engagement and Implementation Committees to help develop the Lower LA River Revitalization Plan [LLARRP]. In this role, CWH teamed with TetraTech to develop a Watershed Education Plan to support the LLAR Watershed Education Program. This process entailed community-based research with Working Group Committee Members, asset mapping and analysis to support core implementation strategies and watershed education concepts for an online tool and program investments in art, community science, project-based learning, parks and schools throughout the lower LA River communities.



Living Laboratories

Proposition 1

State Water Resources Control Board awarded CWH a \$1 million grant to provide Technical Assistance (TA) to Small Disadvantaged Communities that are interested in pursuing

Proposition 1 implementation funding for stormwater management projects. CWH has assembled TA Teams with professional expertise in conventional and green infrastructure stormwater management, project planning and analysis, engineering, project design and construction, education and engagement, and successful competitive grant proposal development.



Drought Response Outreach Program for Schools

CWH is working with LAUSD to implement their Drought Response Outreach Program for Schools (funded by State Water Resources Control Board) on five campuses. CWH is managing the Performance Monitoring and the Education and Outreach elements of the DROPS project.



Elmer Avenue & Elmer Paseo



Elmer Ave and Elmer Paseo continue to inspire and inform community-based organizations of the benefits that result from green infrastructure projects for communities. CWH staff shared lessons learned about the design and implementation process and how stormwater runoff is being managed in a way that results in multiple community benefits.



COUNCIL FOR WATERSHED HEALTH

CWH was founded by Dorothy Green to facilitate an inclusive consensus process to preserve, restore and enhance the Los Angeles and San Gabriel River Watersheds. Since 1996, CWH has worked to advance the health and sustainability of our region's watersheds, rivers and habitats - both in natural and urban neighborhoods.

For twenty years, CWH has worked to promote more efficient use of stormwater resources by providing leadership, guidance, and technical assistance to agencies and organizations to affect sound watershed planning and management.

CWH Programs reflect the complexity of water resiliency in a changing climate and continue to address diverse topics such as:

Urban Stormwater Capture and Recharge

Community Capacity Building

Multi-Benefit Green Infrastructure Projects

Watershed Monitoring and Research

Healthy Watersheds—
Healthy Communities

 /CouncilforWatershedHealth

 @watershedhealth

 @CWH_org

Healthy Streams for Angelenos

Los Angeles River Watershed Monitoring Program

In 2007, local, state, and federal stakeholders formed the Los Angeles River Watershed Monitoring Program (LARWMP) to provide managers and the public with a more complete picture of conditions and trends in the Los Angeles River Watershed. This continuous monitoring effort has provided the information that can help strengthen planning efforts, decisions making, and has better informed outreach and education about the health of the river, including how to use it safely. The monitoring data helps us understand how the river is responding to a complex web of pressures ranging from pollution, human alteration, drought, and climate change. Every year for the past 10 years, teams of LARWMP scientists have collected the data that has informed our understanding of the health of the Los Angeles River Watershed.



Water Connections - Community Science Initiatives

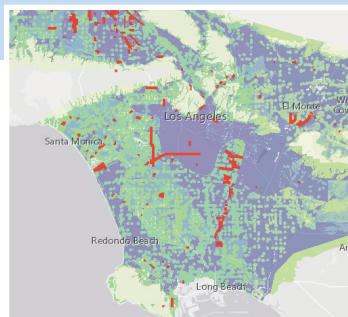


This summer, CWH launched Watershed Connections, a summer science education initiative, to engage local communities in watershed education through science communication tools. Community science means equipping community members who may have no specialized scientific knowledge or research experience with the tools and knowledge needed to study and improve the health of their environment and community. CWH facilitated interactive educational activities at outreach events, led educational kayak tours with LA River Expeditions, and published weekly "Summer Science Friday" blog posts to

educate communities on a variety of watershed topics. Topics for the blog posts included how to recreate safely in the Los Angeles River Watershed, where in Los Angeles to go on a "Watershed Safari," and how to be a better watershed steward in your community. CWH staff conducted "pop up" community science activities at local events to introduce residents to water science about the LA River and nature-based approaches to managing stormwater. Through the support of Edison International, CWH will expand its community science program in 2018 at parks along the Los Angeles River.

GIS Research & Equitable Planning Tools

Our GIS research team continued to build on long-term projects including Arundo control and mitigation, Prop 1 Disadvantaged Community Involvement Program, and environmental justice through stormwater capture and transportation modeling. We have an ongoing role in Arundo removal projects in the Los Angeles River working with the National Forest Foundation and the Los Angeles Conservation Corps. Our Prop 1 DACIP partnership with TreePeople will result in water education and technical resources for the most unserved communities in the LA Region, and our transportation and stormwater analysis open data maps continue to be used by agencies and community planning groups to prioritize local stormwater capture and groundwater recharge projects.



COUNCIL FOR WATERSHED HEALTH

Our Vision Looking Forward

Dorothy Green forever changed the way California's water agencies interact with one another and the communities they serve. She challenged us to capture more stormwater to increase local water supplies, use natural systems to improve water quality, and focus on investing in the neighborhoods suffering the worst impacts of pollution. It makes perfect sense to us now, but Dorothy knew it then when she started the Council over 20 years ago.

During her early years with the Council, Dorothy launched a "Consensus Campaign" to build understanding around the power of water to achieve multiple benefits for our communities and watersheds: health, safety, and resource preservation. The Council continues this work by actively engaging individuals, communities, and water agencies in preserving, restoring, and enhancing the Los Angeles and San Gabriel River Watersheds. Our water projects and initiatives focus on the heart of urban communities because we know the solutions to pollution begin upstream. Through science-based research, education and inclusive stakeholder engagement, the Council's work is connecting people to water and their environment, while shaping the next generation of water leaders.

As we celebrate another year of meaningful work, it is important to acknowledge the power of partnerships, the collaborations across public agencies, community, and the private sector that truly make success happen. From our green infrastructure projects in neighborhoods and schools to our student internships and LA River watershed monitoring program, our partnerships with water agencies, community-based organizations and universities help engage, educate, and connect people to their local watershed and each other. This is our vision: one that invests in building the capacity of individuals, local community groups, water managers and policy makers to carry forward a more sustainable water future for the LA Region.

So thank you to our partners for another year of impact. It is time to begin a new Consensus Campaign, one that brings together groups of diverse interests around the power of water to change lives and where we all have a role in carrying this work forward.

- Wendy Ramallo, Executive Director



THANK YOU TO OUR PARTNERS, SPONSORS AND AGENCIES

Los Angeles Department of Water & Power

Los Angeles Sanitation

Los Angeles Bureau of Engineering
Metropolitan Water District of Southern California

Los Angeles County Department of Public Works

Edison International

Southern California Gas Company

Burbank Water & Power

California Coastal Conservancy

Los Angeles Unified School District

State Water Resources Control Board

San Gabriel Valley Municipal Water District

Santa Monica Mountains Conservancy
Mountains Recreation and Conservation Authority

Rivers and Mountains Conservancy

Scotts Foundation

Water Foundation

Bank of America

Building Industry Association of Southern California

BizFed

California Community Foundation

California Invasive Plant Council

Carollo Engineering

CDM

DakeLuna Consultants

TetraTech

WSP

Graffiti Busters

The Home Depot

The Trust for Public Land

TreePeople



COUNCIL FOR
**WATERSHED
HEALTH**

700 N. Alameda Street,
Los Angeles, CA 90012
www.watershedhealth.org
213.229.9945
a 501 (c)(3) Nonprofit Corporation