

NATURE BASED SOLUTIONS

TASK FORCE MEETING 5

JUNE 2026

Background & Purpose

Nature-based Solutions Task Force “NbS Task Force” goals:

Champion the implementation of NbS to improve the health of communities and ecosystems throughout Los Angeles County by:

- 1 Developing a countywide definition and standard for Nature-based Solutions
- 2 Creating a framework to more effectively prioritize Nature-based Solutions in stormwater capture projects, and
- 3 Building upon the LA County Safe, Clean Water Program’s (SCWP) Metrics & Monitoring Study and 2025 Interim Guidance.

Phase 2 Purpose

Recommend metrics tied to the Task Force's proposed Definition, Standard, and Criteria, ensuring they are measurable, tangible, and rooted in ecological and social outcomes.

- **Frame metrics to encourage comprehensive, systems-based assessment of Nature-based Solutions**, capturing benefits across hydrology, soil health, vegetation, climate resilience, and long-term functionality.

Discuss the integration of these metrics into the Safe, Clean Water Program, including Watershed Area reporting, tracking progress, and longer-term program evaluation.

Explore approaches for Countywide Application, exploring how Nature-based Solutions metrics may be adopted or adapted across planning processes, departmental initiatives, and multi-agency collaborations beyond SCWP.

Meeting Objectives

- Walkthrough NbS Metrics Design Survey
- Craftwater Presentation + Listening Session on Scoring Updates

Introductions

Please Share:

- Name, pronouns, affiliation.
- Icebreaker: Share a summer adventure, trip or activity you have planned.



**Draft NbS Task Force
Recommendations Report**



Visual 2-page Summary

NbS Definition(s)

NbS Definition: Nature-based Solutions address societal challenges through **sustainable actions** that **protect and restore living ecosystems and their functions** to ensure **human well-being** and benefit **biodiversity** by meeting the established NbS standard and associated criteria.

Water-specific Definition: Nature-based Solutions address **water quality, water supply and stormwater challenges** through **sustainable actions** that **protect and restore living ecosystems and their functions** to ensure **human well-being** and benefit **biodiversity** by meeting the established NbS standard and associated criteria.

NbS Standard:

NbS Standard: Nature-based Solutions must implement **place-appropriate** and **evidence-backed living processes and infrastructure**, such as soil and vegetation, to improve **long-term ecosystem function, habitat connectivity, and community health and well-being**. Success of Nature-based Solutions should be **qualitatively and quantitatively evaluated** using the following criteria and indicators (full set of criteria outlined in the Standard, to be read as an integrated framework, can be found in the report).

NbS Criteria

Key NbS Criteria

Foundational for any project to qualify as a Nature-based Solution

Criterion 1: NbS result in a benefit to biodiversity and ecosystem integrity.

Criterion 2: Design of NbS is informed by scale.

Criterion 3: NbS effectively respond to societal and communal challenges.

Criterion 4: NbS are a communal asset cared for through adaptive management and stewardship.

NbS Criteria

Key NbS Criteria

Foundational for any project to qualify as a Nature-based Solution

Criterion 1: NbS result in a benefit to biodiversity and ecosystem integrity.

Criterion 2: Design of NbS is informed by scale.

Criterion 3: NbS effectively respond to societal and communal challenges.

Criterion 4: NbS are a communal asset cared for through adaptive management and stewardship.

Project-Level Guidance

Criteria for application across all projects including NbS

Criterion 5: Economic viability over time.

Criterion 6: Projects balance trade-offs and ensure equitable outcomes.

Program-Level Guidance

Criteria for broader policy and governance structures that enable NbS

Criterion 7: Inclusive, transparent, and empowering governance.

Criterion 8: Alignment across jurisdictions and agencies.

Metrics and Indicators

Measures

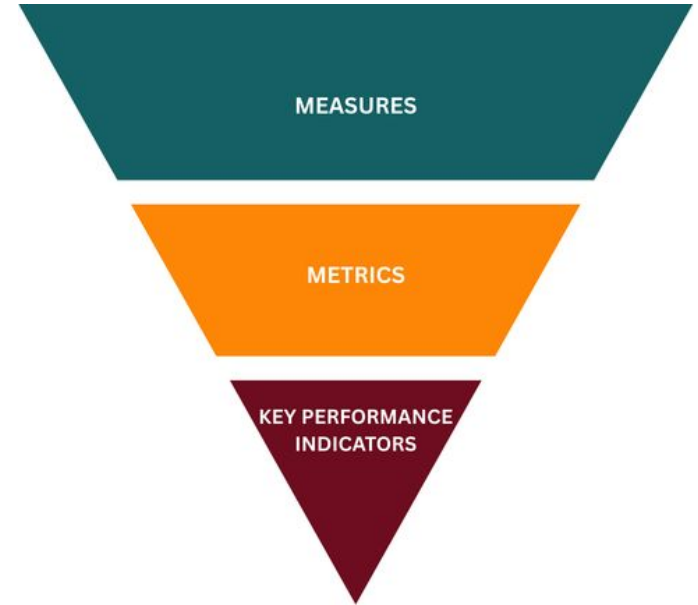
Measures are raw pieces of data that quantify a specific attribute or condition (e.g., square feet of permeable surface installed, number of trees planted, gallons of stormwater captured).

Metrics (PMs)

Metrics, referred to interchangeably in the SCWP as **Performance Measures (PMs)**, are standardized values derived from one or more measures. **Metrics quantify benefits provided by individual projects or programs and may express relationships among data points** (e.g., gallons captured per acre, trees planted per project). While metrics are measurable and used for analysis, they do not necessarily correspond directly to a target or objective.

Indicators (Key Performance Indicators)

Indicators (or KPIs) are a subset of metrics that measure progress toward defined goals or targets. In the context of the Safe, Clean Water Program, indicators aggregate or summarize Metrics (PMs) at the Watershed Area scale and at the SCWP-wide scale. Indicators are used to quantify cumulative benefits of SCWP-funded projects and to communicate and track progress toward Watershed and Program goals.



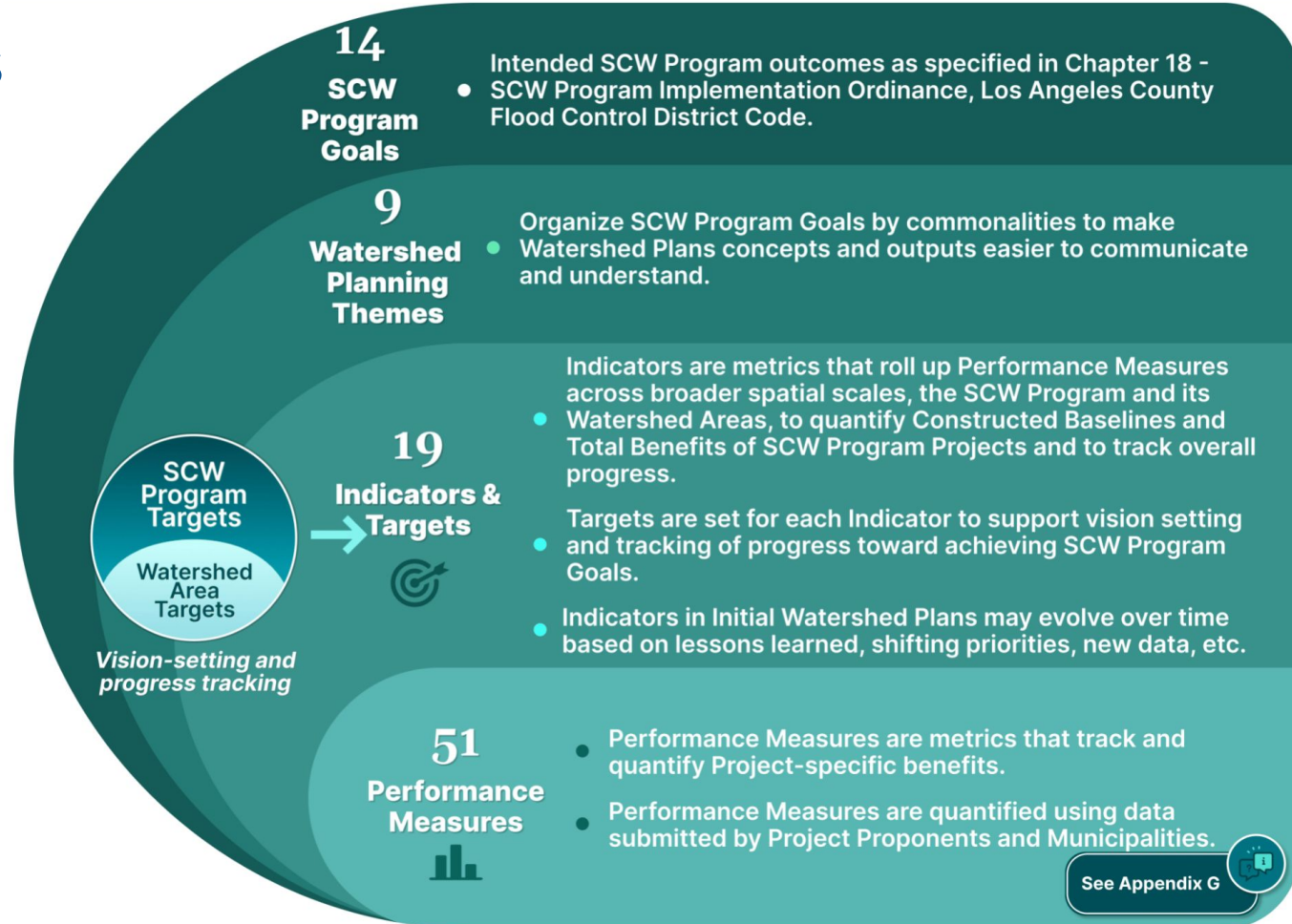
How to Pick Useful Metrics

The key to ensuring the usefulness of metrics is to limit the number used. In most cases, select 3 to 5 metrics from the list of candidate metrics based on the following criteria:

- 1 Communication Power.** Does this metric communicate to a broad range of audiences? Would those who pay attention to your work (e.g., voters, legislators, agency program officers) understand what this metrics means? Communication power means that the data must have clarity with diverse audiences.
- 2 Proxy Power.** Does the metric say something of central importance about the result? (Or is it peripheral?) Can this metric stand as a proxy for the plain English statement of well-being? What pieces of data really get at the heart of the matter?
- 3 Data Power.** Do we have quality data on a timely basis? We need data which is reliable and consistent. And we need timely data so we can see progress, or the lack thereof.

Rate each candidate metric “high,” “medium,” or “low” for each criterion. Metrics that have high ratings for all three criteria are good choices for metrics.

Existing Metrics



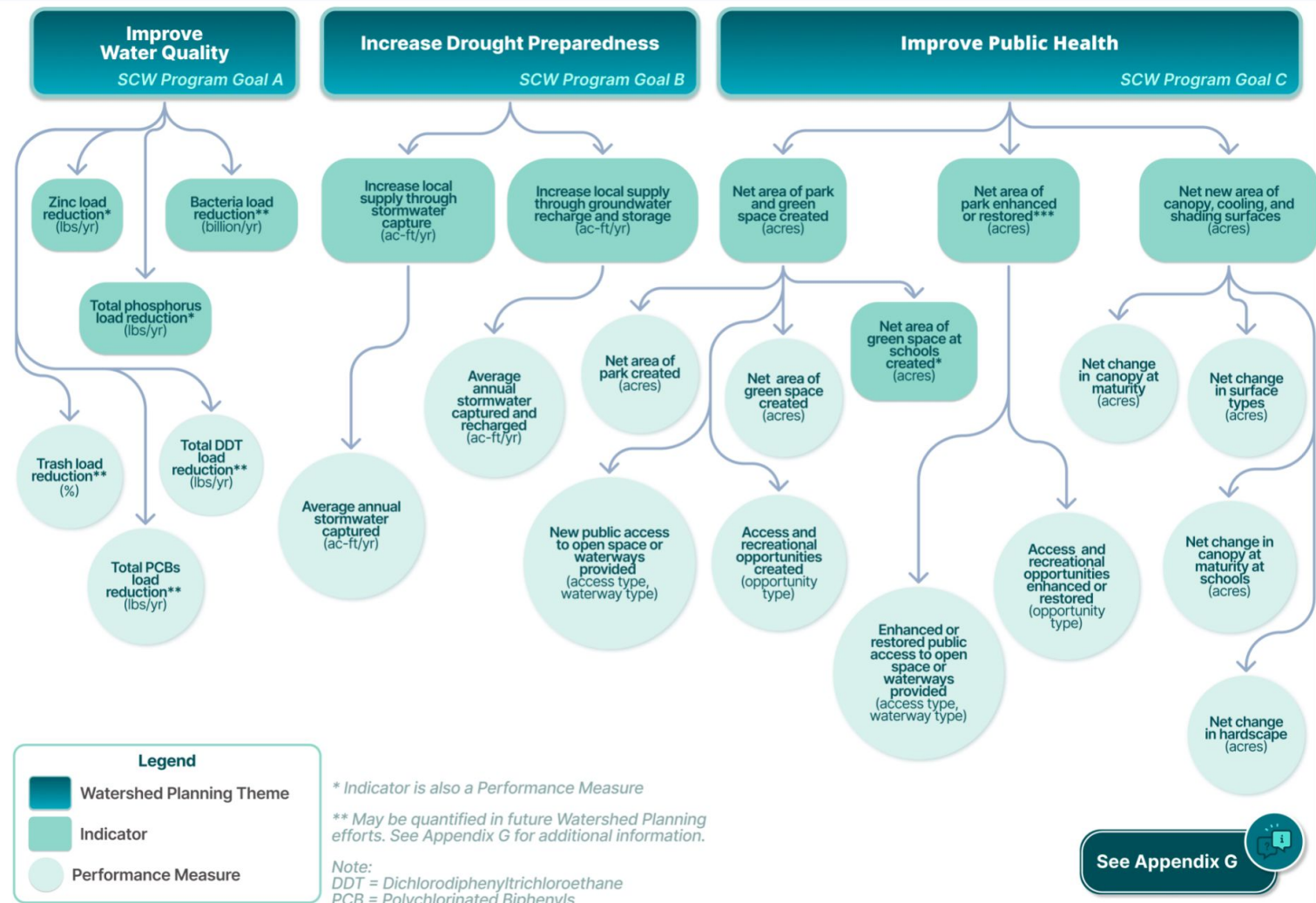
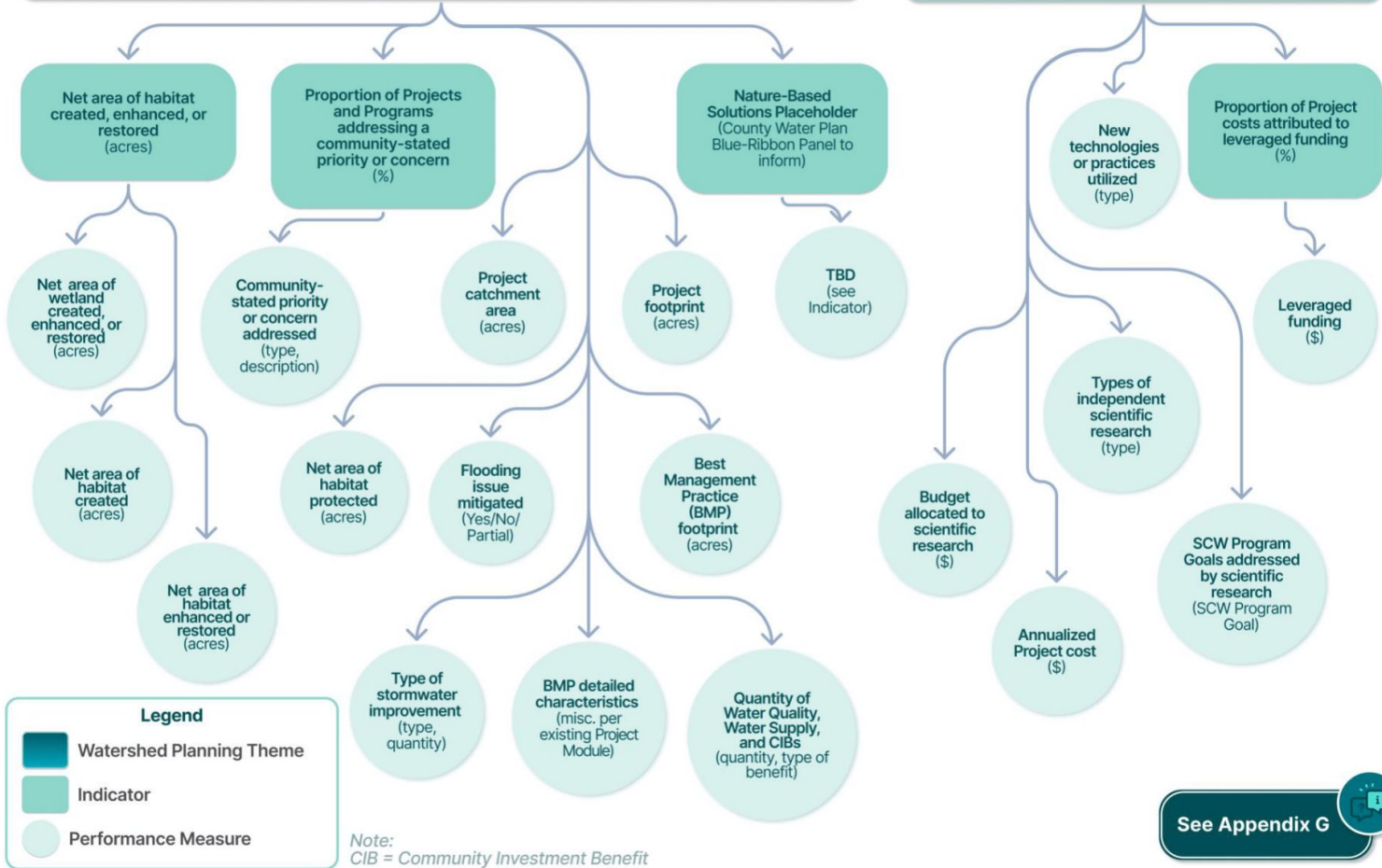


Figure 4-2. Indicators and PMs

Deliver Multi-Benefits with Nature-Based Solutions and Diverse Projects
SCW Program Goals E, F, G

Leverage Funding & Invest in Research & Development
SCW Program Goals D, H, I



See Appendix G

Figure 4-2. Indicators and PMs (continued)

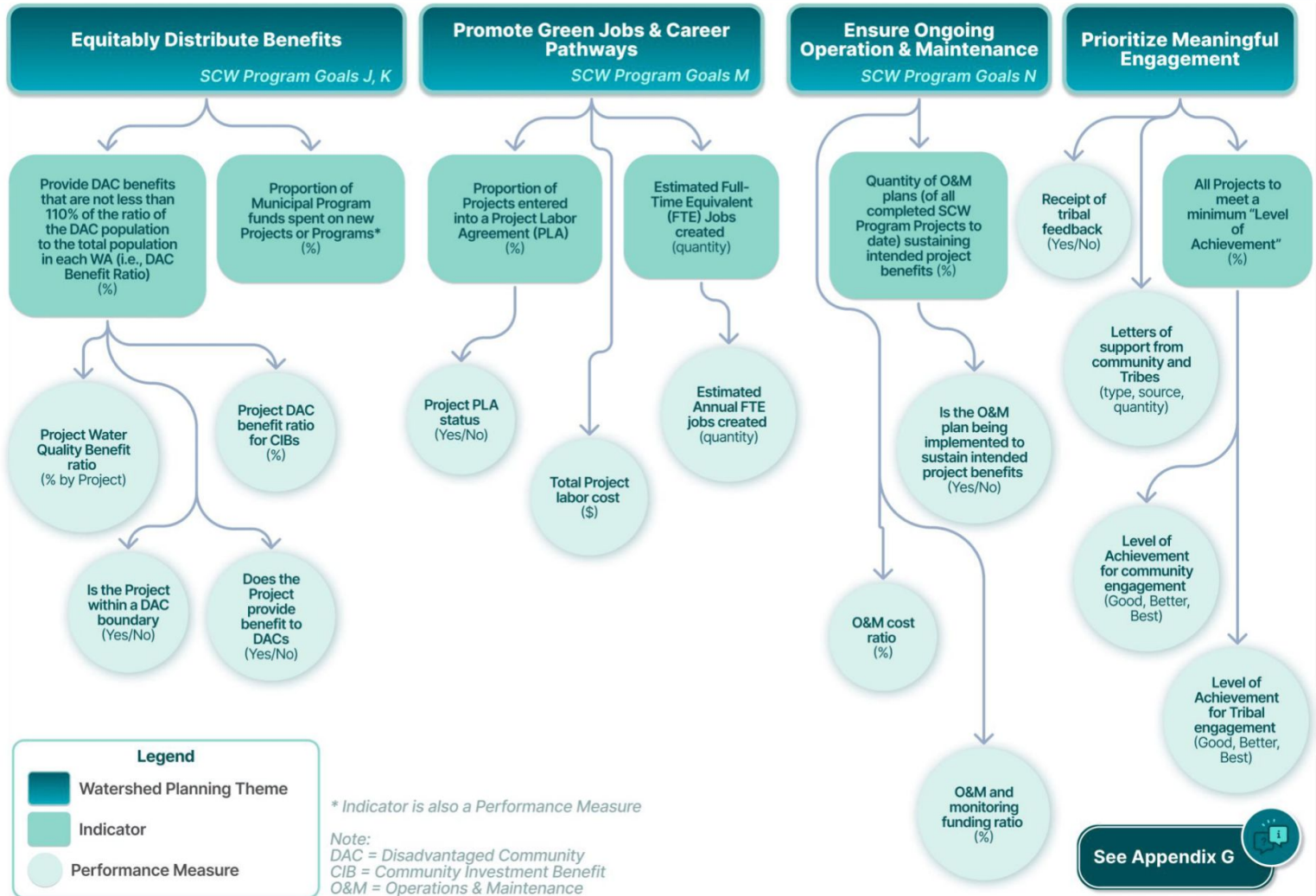


Figure 4-2. Indicators and PMs (continued)

SCW Program NbS Metrics Integration Survey

Purpose: This survey supports development of the NbS Phase 2 Recommended Metric

“What proportion of project outcomes are achieved through Nature-based Solutions?”

The survey is designed to help identify how existing SCW Program Project Portal data can be used to assess the extent to which SCW Program outcomes are achieved through NbS.

SCW Program NbS Metrics Integration Survey

Questions are organized around relevant SCWP goals:

- Goal A: Improve water quality and contribute to attainment of water-quality requirements.
- Goal B: Increase drought preparedness by capturing more stormwater and/or urban runoff to store, clean, reuse, and/or recharge groundwater basins.
- Goal C: Improve public health by preventing and cleaning up contaminated water, increasing access to open space, providing recreational opportunities, and helping communities mitigate and adapt to climate change through shade and green space.
- Goal E: Invest in infrastructure that provides multiple benefits.
- Goal F: Prioritize Nature-based Solutions.

The survey has 6 sections and will take approximately 45 minutes to complete.

Some questions may not be immediately relevant to metric development or the NbS Addendum to the Watershed Plans, but they provide important information for the NbS Task Force team.

SCW Program NbS Metrics Integration Survey

Through this survey, we are seeking Task Force input on how existing SCW Program metrics and measures may be operationalized into a Nature-based Solutions assessment methodology. Specifically asking:

- What existing SCW Program data should count as NbS?
- What additional data may be needed to support NbS assessment?
- What numerator/denominator structures or equations should be used to quantify the “extent achieved through NbS”?

Survey responses may help refine:

- Proposed classification systems
- Dropdown categories
- Numerator and denominator structures
- Weighting approaches
- Potential equations for NbS assessment
- Qualitative questions needed to support metric development

A supporting cheat sheet prepared by Paradigm includes the indicators mentioned in the survey, along with their supporting definitions, units, and data points.

Craftwater Scoring Updates SOW + Listening Session

- Scoring Revision SOW
- NbS Task Force Recommendations
- Listening Session

NbS Task Force Phase 3

- **Task Force will be broken up into Working Groups**
- **Broaden focus on the County Water Plan and 2 Year Action Plan Updates**
- **Coordination with Departments across the County**
- **Exploratory Research**

Phase 2 Anticipated Schedule

~~Jan. 20, 2026 | Kick-off Meeting~~

~~Feb. 10, 2026 | In-person Task Force Meeting 1~~

~~Mar. 10, 2026 | In-person Task Force Meeting 2~~

~~Mar. 20, 2026 | Virtual Report Out 1~~

~~Apr. 7, 2026 | In-person Task Force Meeting 3~~

~~May 5, 2026 | Virtual Task Force Meeting 4~~

~~June 2, 2026 | In-person Task Force Meeting 5~~