

2017 CALENDAR

LANDSCAPING

Lightly



2017

January

1	2	3	4	5	6	7
8	9	10	11	12	13	14
15	16	17	18	19	20	21
22	23	24	25	26	27	28
29	30	31				

February

		1	2	3	4
5	6	7	8	9	10
11	12	13	14	15	16
17	18	19	20	21	22
23	24	25	26	27	28

March

			1	2	3	4
5	6	7	8	9	10	11
12	13	14	15	16	17	18
19	20	21	22	23	24	25
26	27	28	29	30	31	

April

						1
2	3	4	5	6	7	8
9	10	11	12	13	14	15
16	17	18	19	20	21	22
23	24	25	26	27	28	29
30						

May

	1	2	3	4	5	6
7	8	9	10	11	12	13
14	15	16	17	18	19	20
21	22	23	24	25	26	27
28	29	30	31			

June

					1	2	3
4	5	6	7	8	9	10	
11	12	13	14	15	16	17	
18	19	20	21	22	23	24	
25	26	27	28	29	30		

July

						1
2	3	4	5	6	7	8
9	10	11	12	13	14	15
16	17	18	19	20	21	22
23	24	25	26	27	28	29
30	31					

August

		1	2	3	4	5
6	7	8	9	10	11	12
13	14	15	16	17	18	19
20	21	22	23	24	25	26
27	28	29	30	31		

September

						1	2
3	4	5	6	7	8	9	
10	11	12	13	14	15	16	
17	18	19	20	21	22	23	
24	25	26	27	28	29	30	

October

1	2	3	4	5	6	7
8	9	10	11	12	13	14
15	16	17	18	19	20	21
22	23	24	25	26	27	28
29	30	31				

November

			1	2	3	4
5	6	7	8	9	10	11
12	13	14	15	16	17	18
19	20	21	22	23	24	25
26	27	28	29	30		

December

						1	2
3	4	5	6	7	8	9	
10	11	12	13	14	15	16	
17	18	19	20	21	22	23	
24	25	26	27	28	29	30	
31							

Dear Friend,

On behalf of the Council for Watershed Health, I am pleased to present the 6th edition of our 2017 Landscaping Lightly Calendar. Each year, the Council produces Landscaping Lightly to highlight the important role each person, family and neighborhood can play in creating a more sustainable water future. As we enter a fifth consecutive year of drought, focusing on ways to both save water and create attractive natural outdoor environments can inform and support our region to achieve ambitious water conservation goals.

With an increased focus placed on reducing outdoor residential water use we have seen impressive results at the state and local levels. In the City of Los Angeles alone, water use is down nearly 20% since 2014, and through an aggressive program to incentivize replacement of turf, over 37 million square feet of water-thirsty grass has been removed, saving 1.6 billion gallons of water per year. That's enough water to serve 15,000 households for an entire year. This is tremendous progress, but we can do more. Together, we can continue to promote water resilient landscapes that brings a true watershed approach throughout the region.

This calendar was designed for residents, community leaders, teachers, students and agencies to provide helpful tips, memorable slogans, and enjoyable illustrations that inspires interest to conserve water and create healthy watersheds for healthy communities through California friendly landscapes.

With support from the San Gabriel & Lower Los Angeles Rivers and Mountains Conservancy and each of the partners listed below who made this edition of Landscaping Lightly possible, we at the Council hope you'll make 2017 a great year of sustainable landscaping in your own yard and community!

Sincerely,



Wendy Ramallo
Executive Director | Council for Watershed Health



RECYCLE THE RAIN



SLOW IT, SPREAD IT, SINK IT

Tips

Slow it down, spread it out, and sink it in! Keep storm-water from polluting streams and the ocean by creating areas where rainwater can soak into your landscape.

Swales are u-shaped basins in your landscape that capture rain, preventing it from flowing down streets and picking up pollution. Visit the Council for Watershed Health's demonstration green street and alley at Elmer Avenue for ideas (tinyurl.com/GreeningElmer).

The first step is to find out if your soils allow water to quickly soak in as you don't want to create areas of standing water that will breed mosquitos. TreePeople's website (www.treepeople.org/which-practices-are-you) tells you how.

Be sure to plant your swale with deep-rooted native plants and make sure to apply mulch frequently to build your soil and keep weeds at bay. Once plants have matured, keep them trimmed away from the ground and do your best not to disturb or compact the soils.

JANUARY 2017

Sunday	Monday	Tuesday	Wednesday	Thursday	Friday	Saturday
1 New Year's Day	2	3	4	5	6	7
8	9	10	11	12	13	14
15	16 Martin Luther King Jr.'s Birthday	17	18	19	20	21
22	23	24	25	26	27	28 Chinese New Year
29	30	31			DEC 2016 S M T W T F S 1 2 3 4 5 6 7 8 9 10 11 12 13 14 15 16 17 18 19 20 21 22 23 24 25 26 27 28 29 30 31	FEB 2017 S M T W T F S 1 2 3 4 5 6 7 8 9 10 11 12 13 14 15 16 17 18 19 20 21 22 23 24 25 26 27 28

BEES ARE BENEFICIAL



HONEY BEES NEED OUR HELP

Tips

Create spaces for bees. There are over 4,000 species of native bees in North America. Learn about the native bees in your area and help them thrive.

Support your local beekeeper! About one third of all the fruits and vegetables Americans eat is a result of honeybee and native bee pollination. Purchasing honey from local beekeepers supports a local industry and native plant pollination.

More bees results in more fruits and seeds. Bees pollinate garden plants and wildflowers, too. You can support bees by planting native annual and perennial flowering plants.

Make your yard safe for bees. Avoid using pesticides and never spray blooming flowers when bees are visiting. There are many non-toxic, safe alternatives to pesticides. If you must use a pesticide, only apply when there is no wind and only when temperatures are cooler as bees are less active then.

Sponsored by



FEBRUARY 2017

Sunday	Monday	Tuesday	Wednesday	Thursday	Friday	Saturday
			1	2 Groundhog Day	3	4
5	6	7	8	9	10	11
12	13	14 Valentine's Day	15	16	17	18
19	20 President's Day	21	22	23	24	25
26	27	28 Mardi Gras			JAN 2017 S M T W T F S 1 2 3 4 5 6 7 8 9 10 11 12 13 14 15 16 17 18 19 20 21 22 23 24 25 26 27 28 29 30 31	MAR 2017 S M T W T F S 1 2 3 4 5 6 7 8 9 10 11 12 13 14 15 16 17 18 19 20 21 22 23 24 25 26 27 28 29 30 31

WATER WISELY



WATER EARLY AND EFFICIENTLY

Tips

Be smart and reduce your water use by watering in the early morning when evaporation rates are low.

Keep valuable water on your property where it is needed. Mosquitoes thrive in runoff that collects in gutters and underground storm drains, risking public health. Visit the Greater Los Angeles County Vector Control District's website for more information: www.glacvcd.org.

Lawns require significantly more water than most other garden plants. Take part in lawn-to-garden incentive programs where you can receive a rebate for each square foot of lawn you replace. Visit www.socalwatersmart.com for current rebates.

Install weather-based irrigation controllers, rotor sprinkler heads, drip and micro-emitters to increase water efficiency and save money.

Use the Watering Index to estimate the amount of water your plants need and to set your controller accordingly. This can save hundreds of gallons in the summer months. See the index at: www.bewaterwise.com.

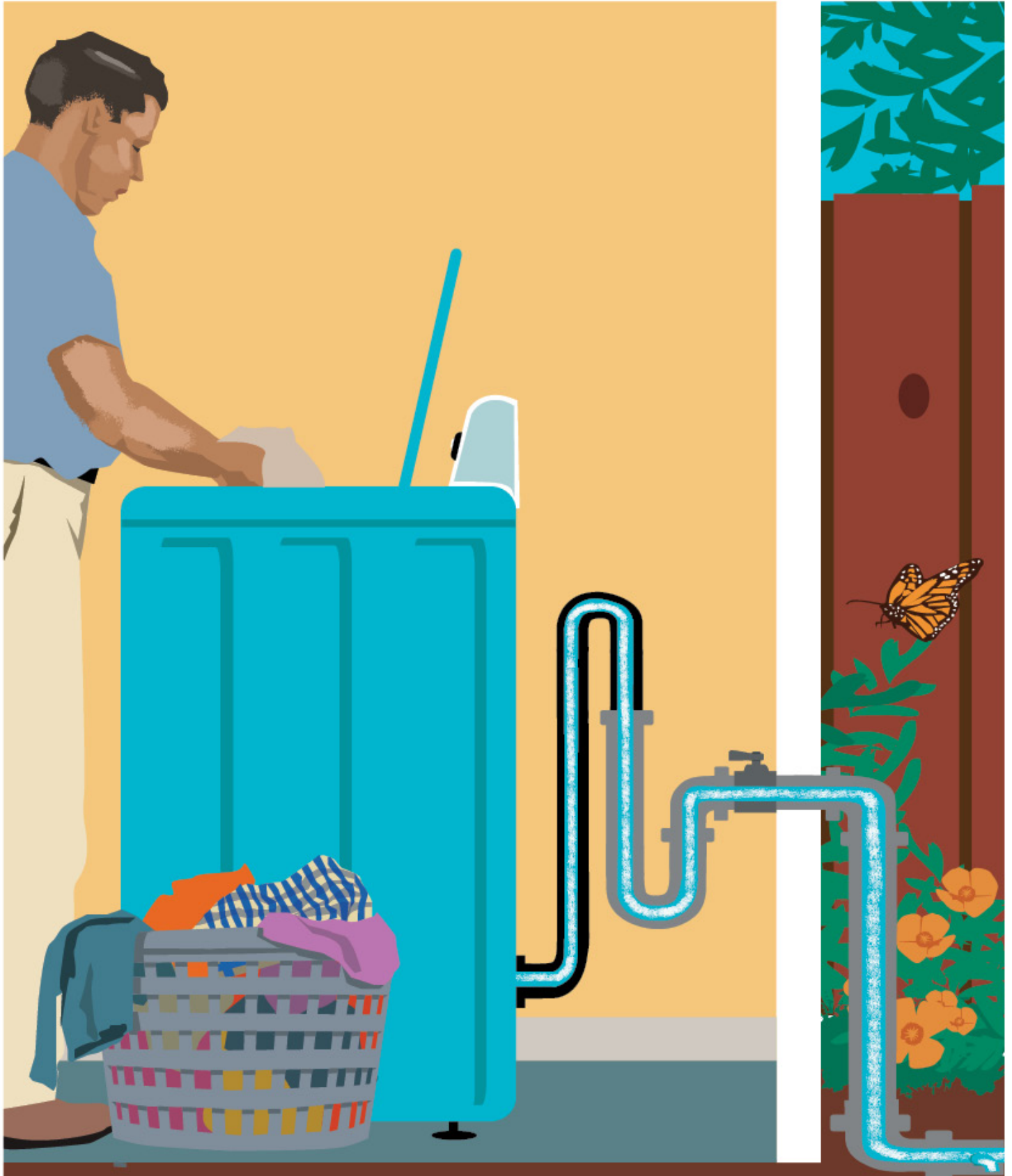
Sponsored by



MARCH 2017

Sunday	Monday	Tuesday	Wednesday	Thursday	Friday	Saturday
FEB 2017 S M T W T F S 1 2 3 4 5 6 7 8 9 10 11 12 13 14 15 16 17 18 19 20 21 22 23 24 25 26 27 28	APR 2017 S M T W T F S 1 2 3 4 5 6 7 8 9 10 11 12 13 14 15 16 17 18 19 20 21 22 23 24 25 26 27 28 29 30		1	2	3	4
5	6	7	8	9	10	11
12	13	14	15	16	17	18
Daylight Savings					St. Patrick's Day	
19	20	21	22	23	24	25
	First Day of Spring					
26	27	28	29	30	31	
					Cesar Chavez Day	

REUSE YOUR WATER



INSTALL A GREYWATER SYSTEM

Tips

Save water and money by using greywater to irrigate trees, shrubs, groundcovers and flower beds. Greywater is "wash water" from bathroom sinks, showers and washing machines.

Participate in a local workshop to learn about how to set up safe and approved greywater reuse systems. Visit www.greywateraction.org for more information.

Check current California Plumbing Code before moving forward with your plans. Permits are needed for some types of greywater systems. The current greywater code, Title 24, Part 5, Chapter 16 can be found at www.hcd.ca.gov. Other greywater policy information can be found at www.greywateraction.org.

Pay special attention to what's going down the drain! Use only detergents and cleaning products low in salts and free of boron. Your plants will thank you for it!

APRIL 2017

Sunday	Monday	Tuesday	Wednesday	Thursday	Friday	Saturday
MAR 2017 S M T W T F S 1 2 3 4 5 6 7 8 9 10 11 12 13 14 15 16 17 18 19 20 21 22 23 24 25 26 27 28 29 30 31	MAY 2017 S M T W T F S 1 2 3 4 5 6 7 8 9 10 11 12 13 14 15 16 17 18 19 20 21 22 23 24 25 26 27 28 29 30 31					1
2	3	4	5	6	7	8 <i>April Fool's Day</i>
9	10 <i>First Day of Passover</i>	11	12	13	14 <i>Good Friday</i>	15
16 <i>Easter Sunday</i>	17 <i>Tax Day</i>	18	19	20	21	22 <i>Earth Day</i>
23	24	25	26	27	28	29
30						

STALL 'TIL FALL

PLANT IN SEASON



LOVE YOUR GARDEN

VERY MULCH



Tips

Mulch is a blanket layer of organic or inorganic material applied to the soil surface or around plants to: conserve

water, even out temperature, suppress weeds, reduce soil compaction, slowly release nutrients, and increase visual appeal.

Native plants evolved with lean soils and DO NOT need fertilizer. Mulch slowly decomposes at the soil surface and releases nutrients at a rate that native plants can absorb.

Keep mulch 4" from base of plants to keep them healthy; otherwise, this can harbor harmful insects, bacteria, and water will mold at the plant base leading to death.

Mulch can assist with winter cold spells as it decomposes at the soil surface and gives off heat during the decomposition process.

Sponsored by



JUNE 2017

Sunday	Monday	Tuesday	Wednesday	Thursday	Friday	Saturday
MAY 2017 S M T W T F S 1 2 3 4 5 6 7 8 9 10 11 12 13 14 15 16 17 18 19 20 21 22 23 24 25 26 27 28 29 30 31	JUL 2017 S M T W T F S 1 2 3 4 5 6 7 8 9 10 11 12 13 14 15 16 17 18 19 20 21 22 23 24 25 26 27 28 29 30			1	2	3
4	5	6	7	8	9	10
11	12	13	14	15	16	17
			Flag Day			
18	19	20	21	22	23	24
Father's Day			First Day of Summer			
25	26	27	28	29	30	

**PROTECT
YOUR
COMMUNITY**



REMOVE INVASIVE PLANTS

Tips

Most plants don't escape our gardens but the handful that do can displace native vegetation and greatly reduce biodiversity. When purchasing plants at the nursery make sure they are not the invasive type that can spread and cause problems. Visit www.plantright.org and www.cal-ipc.org for more information.

Remove invasive weeds like mustard and thistles (pictured). Also control large, billowy invasive grasses, such as fountain grass and pampas grass; they are highly flammable and can quickly spread fire.

Visit www.cal-ipc.org/landscaping and weedwatch.org for the names and photos of plants that are invasive in your area.

Use a string trimmer (aka weedwacker) to cut invasive weeds to the ground before they flower and produce seed. This may take two or three trimmings in spring and summer each year.

Join volunteer efforts to control invasive plants in local parks and wildland areas. Visit volunteermatch.org to find events in your area.

JULY 2017

Sunday	Monday	Tuesday	Wednesday	Thursday	Friday	Saturday
JUN 2017 S M T W T F S 1 2 3 4 5 6 7 8 9 10 11 12 13 14 15 16 17 18 19 20 21 22 23 24 25 26 27 28 29 30	AUG 2017 S M T W T F S 1 2 3 4 5 6 7 8 9 10 11 12 13 14 15 16 17 18 19 20 21 22 23 24 25 26 27 28 29 30 31					1
2	3	4	5	6	7	8
9	10	11 Independence Day	12	13	14	15
16	17	18	19	20	21	22
23	24	25	26	27	28	29
30	31					

STAY FIRE SAFE



PROTECT YOUR HOME FROM WILDFIRES

Tips

If you live in a fire hazard area, learn how to create fire resistant structures and maintain a defensible space around your home. Visit www.ucanr.org/sites/SAFElandscapes for more info.

When landscaping, consult with your local fire department to make sure that your plant selection and spacing are fire safe.

Minimize flammable plants from within 30 feet of your house. Maintain individual trees and shrubs to keep them free of dead wood.

Create space between trees and shrubs located within 30-100 feet of your structure (200 feet if your local fire department requires it). Visit firecenter.berkeley.edu resources for more tips.

Regularly clean debris from your roof and gutters to keep blowing embers from igniting structures.

Start a local Fire Safe Council for your community to educate residents on how to protect their homes and neighborhoods from wildfire. Learn more about how you can join the over 100 Fire Safe Councils at www.cafiresafecouncil.org.

AUGUST 2017

Sunday	Monday	Tuesday	Wednesday	Thursday	Friday	Saturday
JUL 2017 S M T W T F S 1 2 3 4 5 6 7 8 9 10 11 12 13 14 15 16 17 18 19 20 21 22 23 24 25 26 27 28 29 30 31	SEP 2017 S M T W T F S 1 2 3 4 5 6 7 8 9 10 11 12 13 14 15 16 17 18 19 20 21 22 23 24 25 26 27 28 29 30	1	2	3	4	5
6	7	8	9	10	11	12
13	14	15	16	17	18	19
20	21	22	23	24	25	26
27	28	29	30	31		

PUT YOUR NATURE EYES ON BE A CITIZEN SCIENTIST



Tips

Get outside and take pictures of the plants and animals that live all over Los Angeles.

From the Los Angeles River to your yard, local park, or school grounds—there is nature all around us. Natural History Museum of Los Angeles County scientists need help documenting the plants and animals that live in these places. With your data, we can build a better city that works for humans and wildlife alike.

Grab your smartphone or digital camera and go take pictures. For plants, get pictures of flowers, fruits, leaves, and the whole plant. For animals, try to get in focus close-ups from different angles. Move towards the animal slowly taking pictures as you go.

Take lots of pictures, but only submit the best ones! Send your pictures to the L.A. Nature Map. E-mail them to nature@nhm.org. Or, post them to social media [#natureinLA](https://twitter.com/natureinLA). Or, upload them directly to the map using the free iNaturalist mobile application.

For information on citizen science projects and events visit www.nhm.org/nature/citizen-science.

SEPTEMBER 2017

Sunday	Monday	Tuesday	Wednesday	Thursday	Friday	Saturday
AUG 2017 S M T W T F S 1 2 3 4 5 6 7 8 9 10 11 12 13 14 15 16 17 18 19 20 21 22 23 24 25 26 27 28 29 30 31	OCT 2017 S M T W T F S 1 2 3 4 5 6 7 8 9 10 11 12 13 14 15 16 17 18 19 20 21 22 23 24 25 26 27 28 29 30 31				1	2
3	4	5	6	7	8	9
10	Labor Day	12	13	14	15	16
17	18	19	20	21	22	23
24	25	26	Rosh Hashanah	28	First Day of Autumn	30
			27	29	Yom Kippur	

COOL ALTERNATIVE TO GRASS



Tips

Replacing your grass with a rain garden of native plants will both reduce your water bill and require less maintenance once your new landscape is established. Check local agencies for rebates.

Trees are a cooling, living asset in more ways than one. Planting shade trees on the west, north, and east sides of a yard can reduce summer air conditioning costs. Shade trees lower surface and air temperatures. Planting native trees also provides important habitat for local birds and pollinators.

Avoid using gravel as mulch as it can increase air temperature and negatively affect plant health. Select low growing groundcovers as a living mulch to reduce erosion, moderate soil temperature, and reduce evaporation. Organic mulch is also a good choice and may be offered by local greenwaste agencies for free.

Sponsored by



PASADENA
Water & Power
SERVING THE COMMUNITY SINCE 1906

OCTOBER 2017

Sunday	Monday	Tuesday	Wednesday	Thursday	Friday	Saturday
1	2	3	4	5	6	7
8	9 Columbus Day	10	11	12	13	14
15	16	17	18	19	20	21
22	23	24	25	26	27	28
29	30	31 Halloween			SEP 2017 S M T W T F S 1 2 3 4 5 6 7 8 9 10 11 12 13 14 15 16 17 18 19 20 21 22 23 24 25 26 27 28 29 30	NOV 2017 S M T W T F S 1 2 3 4 5 6 7 8 9 10 11 12 13 14 15 16 17 18 19 20 21 22 23 24 25 26 27 28 29 30

GROW NATIVE PLANTS



CELEBRATE CALIFORNIA'S BIODIVERSITY

Tips

A California Native Garden can be considered, "tended nature in miniature" because of the authentic, soulful landscapes that utilize naturalistic groupings, and are modeled after the wild places of the California, showcasing the subtle beauty of the region.

A proper assemblage of natives will always work to attract wildlife in your yard, such as, beneficial pollinators, hummingbirds, songbirds, and other (to borrow a term from John Muir) "fellow mortals."

Many California native plants require little supplemental water and quite a few are easy to purchase at your local nursery! For more information be sure to visit www.cnps.org/cnps/grownative.

Purchase and plant native plants between November and February. This will enable them to develop strong roots before harsh summer conditions.

Sponsored by



NOVEMBER 2017

Sunday	Monday	Tuesday	Wednesday	Thursday	Friday	Saturday
OCT 2017 S M T W T F S 1 2 3 4 5 6 7 8 9 10 11 12 13 14 15 16 17 18 19 20 21 22 23 24 25 26 27 28 29 30 31	DEC 2017 S M T W T F S 1 2 3 4 5 6 7 8 9 10 11 12 13 14 15 16 17 18 19 20 21 22 23 24 25 26 27 28 29 30		1	2	3	4
5	6	7	8	9	10	11
Daylight Savings Ends		Election Day				Veterans Day
12	13	14	15	16	17	18
19	20	21	22	23	24	25
				Thanksgiving		
26	27	28	29	30		

HARVEST THE RAIN



PROTECT OUR RIVERS

Tips

Harvesting the rain is a great way to keep polluted stormwater out of our rivers and oceans. By collecting and using rainwater in your landscape you can help the planet and lower your water bill!

Use rain barrels attached to your rain gutters to collect rain for later use. Be sure to use the collected water regularly; average-sized rain barrels can fill quickly even in small storms.

A 1000 square foot rooftop in Los Angeles produces on average more than 9000 gallons of water annually. For larger landscapes, consider using cisterns to store rainwater to use year-round! Visit <http://www.treepeople.org/sustainable-solutions-0> for more information.

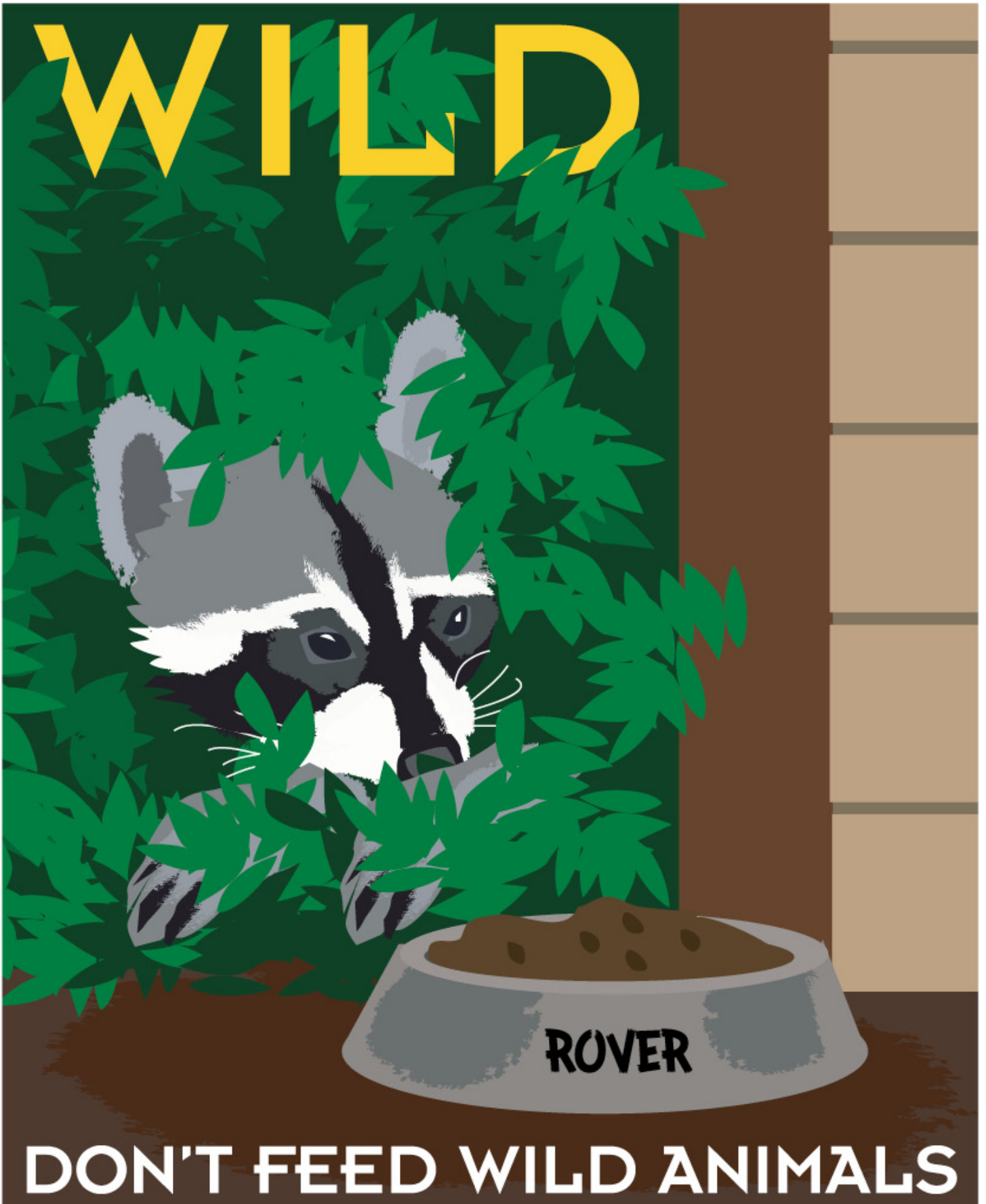
Collect rain water from your roof by using rain gutters and directing your downspouts into designated areas of your garden.

DECEMBER 2017

Sunday	Monday	Tuesday	Wednesday	Thursday	Friday	Saturday
NOV 2017 S M T W T F S 1 2 3 4 5 6 7 8 9 10 11 12 13 14 15 16 17 18 19 20 21 22 23 24 25 26 27 28 29 30	JAN 2018 S M T W T F S 1 2 3 4 5 6 7 8 9 10 11 12 13 14 15 16 17 18 19 20 21 22 23 24 25 26 27 28 29 30 31				1	2
3	4	5	6	7	8	9
10	11	12	13	14	15	16
17	18	19	20 <i>First Day of Chanukah</i>	21	22	23
24	25	26	27	28 <i>First Day of Winter</i>	29	30
31	Christmas Day	First Day of Kwanzaa				

KEEP WILDLIFE

WILD



DON'T FEED WILD ANIMALS

Tips

Do not leave pet food outside, especially overnight. Unwanted scavengers will become accustomed to the food source.

Never feed or try to tame wild animals like squirrels, skunks, raccoons, deer, coyotes, or bears. Dangerous or even deadly conflicts can occur.

Only use trashcans with locking lids. Large animals can tip trashcans, so keep them secure until collection days.

Deer-proof your garden by fencing your yard and by growing plants deer don't like to eat.

If you live near a wildland area, do not leave cats and small dogs outside on their own.

If confronted by a coyote, bear, or mountain lion don't run. Make noise, try to look bigger, and fight back if necessary.

Sponsored by



JANUARY 2018

Sunday	Monday	Tuesday	Wednesday	Thursday	Friday	Saturday
	1 New Year's Day	2	3	4	5	6
7	8	9	10	11	12	13
14	15 Martin Luther King Jr.'s Birthday	16	17	18	19	20
21	22	23	24	25	26	27
28	29	30	31		DEC 2017 S M T W T F S 1 2 3 4 5 6 7 8 9 10 11 12 13 14 15 16 17 18 19 20 21 22 23 24 25 26 27 28 29 30 31	FEB 2018 S M T W T F S 1 2 3 4 5 6 7 8 9 10 11 12 13 14 15 16 17 18 19 20 21 22 23 24 25 26 27 28

JANUARY - RECYCLE THE RAIN

Elmer Avenue Demonstration Green Street
tinyurl.com/GreeningElmer

EPA – Water Infrastructure
water.epa.gov/infrastructure

Greater Los Angeles County Vector Control District –
Mosquito Tips and Assistance
www.glacvcd.org

Central Coastal Low Impact Development Initiative
centralcoastlidi.org

FEBRUARY - BEES ARE BENEFICIAL

American Beekeeping Federation
www.abfnet.org

UC Davis Harry H. Laidlaw Jr. Honey Bee Research
Facility
beebiology.ucdavis.edu

The Xerces Society
www.xerces.org

California State Beekeepers Association
www.californiastatebeekeepers.com

MARCH - WATER WISELY

H2OHouse – Smart from the Start
www.h2ouse.org

Metropolitan Water District - Watering Index and
Calculator
www.bewaterwise.com

TreePeople – Sustainable Solutions, Sprinklers 101
www.treepeople.org/sustainable-solutions-0

WaterSense – EPA Partnership Program
www.epa.gov/watersense/outdoor/index.html

APRIL - REUSE YOUR WATER

CA Plumbing Code (Title 24, Part 5, Ch. 16A, Part I)
www.hcd.ca.gov

Greywater Action
www.greywateraction.org

Greywater Harvesting – Brad Landcaster
www.harvestingrainwater.com/greywater-harvesting

Oasis Design
www.oasisdesign.net

MAY - STALL TILL FALL

Theodore Payne Foundation Fall Garden Guide
http://theodorepayne.org/mediawiki/index.php?title=Fall_Garden_Guide

Riverside-Corona Resource Conservation District -
Wild About Natives
www.rcrcd.com/uploads/files/Wild%20about%20Natives%20Insert_5-5-09.pdf

JUNE - LOVE YOUR GARDEN VERY MULCH

UC Master Gardener Program - The Importance of Mulch
www.youtube.com/watch?v=uFDqP_V4hcl

Bay Friendly Coalition Landscaping & Gardening
Mulching Guide
www.ebmud.com/index.php/download_file/force/1300/1201/?Bay-Friendly-Landscaping-Guide-to-Mulch.pdf

Mother Nature's Backyard - Understanding Mulches
mother-natures-backyard.blogspot.com/2012/07/understanding-mulches_23.html

City of Los Angeles - Bureau of Sanitation
Free Mulch Give-Away
www.lacitysan.org/srpcd/mulch_giveaway.htm

JULY - PROTECT YOUR COMMUNITY FROM INVASIVE PLANTS

California Invasive Plant Council
www.cal-ipc.org

Los Angeles County Weed Management Area
www.lacountywma.org

Sustainable Conservation – Invasive Plants and
Alternatives
www.plantright.org

AUGUST - STAY FIRE SAFE

California Native Plant Society – Fire Safety
www.cnps.org/cnps/conservation/resources.php

Center for Fire Research and Outreach
firecenter.berkeley.edu/resources

County of Los Angeles Fire Department Forestry Division
fire.lacounty.gov/forestry-division/forestry-fuel-modification/

California Fire Safe Council
www.cafiresafecouncil.org

UCCE -Sustainable and Fire Safe Landscapes
www.ucanr.org/sites/SAFELandscapes

SEPTEMBER - CITIZEN SCIENCE

iNaturalist app - California Academy of Sciences
www.inaturalist.org

eBird App - Cornell Lab of Ornithology and National Audubon Society
ebird.org/content/ebird

Nature Map of L.A.
www.nhm.org/nature/map

Citizen Science at Natural History Museum of LA County
www.nhm.org/nature/citizen-science

OCTOBER - COOL ALTERNATIVE TO GRASS

Reimagining the California Lawn: Water-conserving Plants, Practices, and designs.
www.cachumapress.com/catalog/california-lawn.html

How to Plant Trees to Conserve Energy for Summer Shade
arborday.org/trees/climatechange/summershade.cfm
www.treepeople.org/resources/tree-benefits
www.californiareleaf.org

Pasadena Water and Power Water Conservation and Drought Tolerant Landscape Workshops
www.cityofpasadena.net/waterandpower/landscapes/

NOVEMBER - GROW NATIVE PLANTS

California Native Plants for the Garden and Reimagining the California Lawn by C. Bornstein, D. Fross, B. O'Brien
www.cachumapress.com

Care and Maintenance of Southern California Native Plant Gardens by B. Landis, E. Mackey, B. O'Brien
www.cnps.org/store.php

Landscape Plants for California Gardens by Bob Perry
www.landdesignpublishing.com

Plantbook
www.plantbookla.com

Rancho Santa Ana Botanic Garden
www.rsabg.org

Theodore Payne Foundation
www.theodorepayne.org

Weeding Wild Suburbia
www.weedingwildsuburbia.com

DECEMBER - HARVEST THE RAIN

City of Los Angeles – Rainwater Harvesting Program, Homeowner's How-To Guide
www.larainwaterharvesting.org

Green LA – Not Enough to Waste
www.notenoughtowaste.org

Rainwater Harvesting for Drylands and Beyond by Brad Lancaster
www.harvestingrainwater.com

Surfrider Foundation – Ocean Friendly Gardens
www.surfrider.org/programs/entry/ocean-friendly-gardens

TreePeople – How to Capture Rainwater
www.treepeople.org/how-capture-rainwater

JANUARY 2018 - KEEP WILDLIFE WILD

Angeles National Forest
www.fs.usda.gov/main/angeles/home

California Wildlife Center
www.californiawildlifecenter.org
Hotline for Animal Rescue; (818) 591-WILD

County of Los Department of Animal Care & Control
animalcare.lacounty.gov/wildinfo.asp

Department of Fish and Game – Keep Me Wild
www.dfg.ca.gov/keepmewild

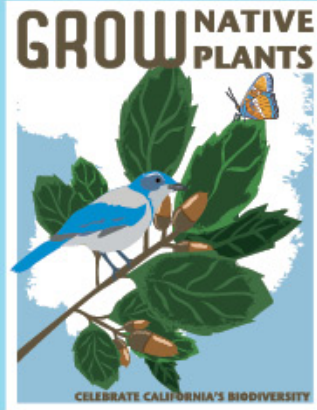
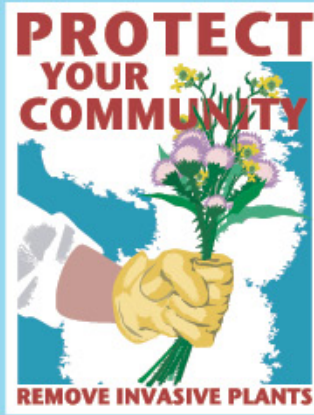
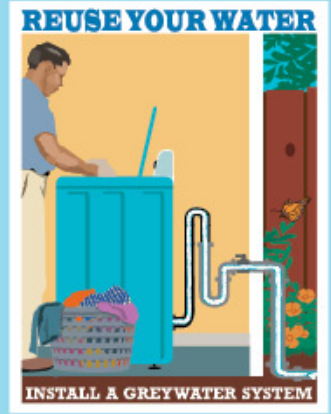
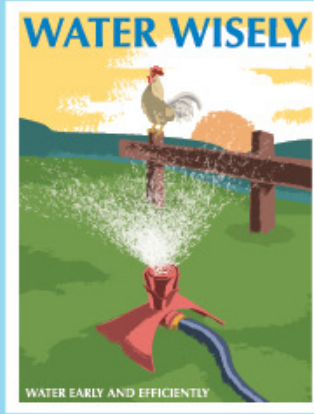
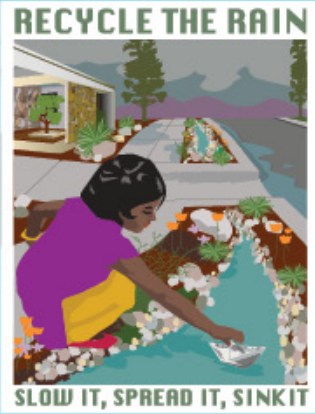
Edward Lum



ARTIST PROFILE

Ed Lum is a talented illustrator and painter whose work is reminiscent of early 20th Century travel posters and the Works Progress Administration (WPA) art of the 1930's. He was born in 1966, is a fourth generation Chinese-American, and works out of his studio at the historic Monterey Trailer Park in Los Angeles.

Check out www.funkyjunkfarms.com to see more of his work. Contact Ed: Edlum711@yahoo.com.



To print this calendar and pass it onto a friend, visit www.landscapinglightly.com.
 Questions and correspondence can be sent to info@watershedhealth.org.

