

DETAILED PROGRAM DAY 3 | OCTOBER 14, 2021 | 2PM-5:30PM



WILDFIRE

WEATHER | WATER | WEEDS | WILDLIFE

DAY 1 - Thurs. Sept. 16, 9am-12pm

DAY 2 - Thurs. Sept. 30, 9am-12pm

DAY 3 - Thurs. Oct. 14, 2pm-5:30pm



COUNCIL FOR
WATERSHED HEALTH

Supported by **UNIVERSITY OF CALIFORNIA**
Agriculture and Natural Resources

THANK YOU SYMPOSIUM PARTNERS & SPONSORS!

SYMPOSIUM PARTNERS



FIRE POPPY



SCARLET LARKSPUR



Our sponsor levels are named after wildflowers that grow abundantly following a fire!



WEATHER | WATER | WEEDS | WILDLIFE

SYMPOSIUM DESCRIPTION

TOGETHER WE WILL:

EXAMINE agency and utility wildfire safety, mitigation measures and resiliency planning for future fire weather

LEARN about research focused on wildfire effects on water quality (sediment, contaminants) and water supply in our region and how we can improve our practices

DISCUSS how forests, shrublands and rivers are recovering (invasive plants and biodiversity loss)

SHARE lessons learned to inform future development & land management



WEATHER | WATER | WEEDS | WILDLIFE

SYMPOSIUM SERIES

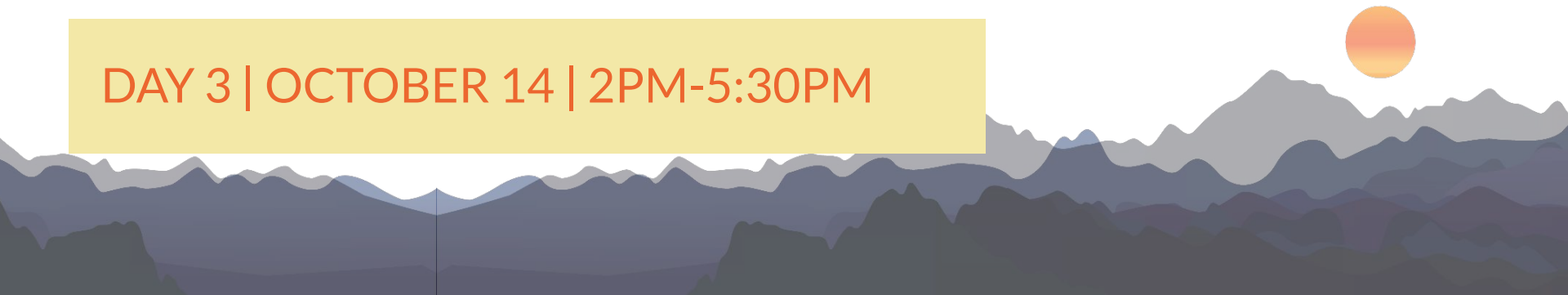
DAY 1 | SEPTEMBER 16 | 9AM-12PM

12pm-1pm Lunchtime Poster Session

DAY 2 | SEPTEMBER 30 | 9AM-12PM

12pm-1pm Lunchtime Poster Session

DAY 3 | OCTOBER 14 | 2PM-5:30PM





WEATHER | WATER | WEEDS | WILDLIFE

DAY 3 TOPICS

community resilience

preparation & response

managing impacts

planning & building

agencies & utilities

land use

climate change

collaboration



WEATHER | WATER | WEEDS | WILDLIFE

SYMPOSIUM DAY 3 AGENDA

2:00 - 2:30pm

Welcome & Housekeeping

2:30 - 3:25pm

Panel 1 Presentations

3:25 - 3:55pm

Panel 1 Discussion and Q&A

3:55 - 4:00pm

Break

4:00 - 5:00pm

Panel 2 Presentations

5:00 - 5:29pm

Panel 2 Discussion and Q&A

5:29 - 5:30pm

Closing Comments

PANEL 1 DISCUSSION & PRESENTATIONS

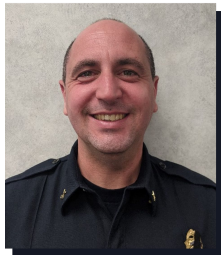


PANEL 1 DISCUSSION & PRESENTATIONS



MODERATOR

Clark Stevens, Architect, Executive Officer, Resource Conservation District of the Santa Monica Mountains



CAL FIRE'S ROLE IN WILDFIRE PREPAREDNESS

David Haas, Forester, California Department of Forestry and Fire Protection (CAL FIRE) - San Bernardino Unit



EARLY ACTION FIRE RESILIENCY PROJECTS AND THE REGIONAL FOREST AND FIRE CAPACITY PROGRAM

Rorie Skei, Chief Deputy Director, Santa Monica Mountains Conservancy and Chief Deputy Executive Officer, Mountains Recreation & Conservation Authority

PANEL 1 DISCUSSION & PRESENTATIONS



COLLABORATING TO IMPROVE COMMUNITY DEFENSIBLE SPACE

Ron Durbin, Chief of the Forestry Division, Los Angeles County Fire Department



PUBLIC AND PRIVATE PARTNERSHIPS FOR WILDFIRE RESILIENCE

Dania Gutierrez, Southern California Program Manager, National Forest Foundation



IMPACTS OF GLOBAL CLIMATE CHANGE ON NATIONAL FORESTS

Jerry Perez, Esq., Forest Supervisor, Angeles National Forest, USDA Forest Service

PANEL 1 DISCUSSION & PRESENTATIONS



LAND USE AND WILDFIRE: REBUILDING TRENDS AND RECOMMENDATIONS FOR
NEW DEVELOPMENTS

Van Butsic, Ph.D., Cooperative Extension Specialist in Land Use, University of California
Berkeley



Clark Stevens

Architect, Executive Officer, Resource Conservation District of the Santa Monica Mountains

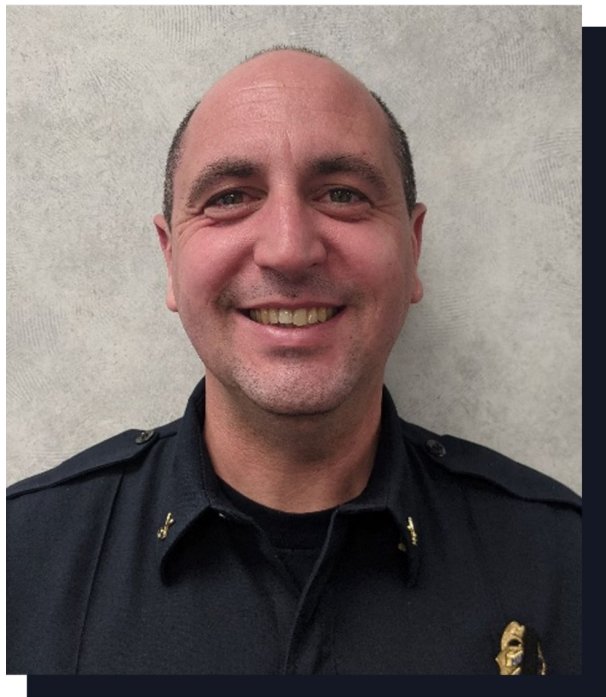
Clark Stevens is the Executive Officer of the Resource Conservation District of the Santa Monica Mountains.

Clark is a teacher, conservationist, and architect specializing in design for culturally and ecologically critical places. Ecological restoration to create recreational, educational, economic and spiritual value is at the core of his planning and design work.

His work as an architect with the RCDSMM involves ecosystem restoration design, such as the Malibu Lagoon Restoration Project and the schematic designs for Liberty Canyon Wildlife Overpass, which will be the largest of its kind in the world. Currently, much of his time at the RCD is spent on research, design and planning strategies in response to wildfire, and in support of resilient communities and ecosystems. Since 2019, Clark has served on the Advisory Board of the California Fire Science Consortium, bringing expertise on “home hardening” and defensible space at the wildland-urban interface.

A lifelong naturalist, Clark represents the RCDSMM on the Santa Monica Bay Restoration Commission Board of Governors, has been an instructor for the Arid Lands Institute, is a past advisory board member of Montana Audubon and a Life Member of Trout Unlimited.

www.rcdsmm.org



David Haas

*Forester, California Department of Forestry and Fire Protection
(CAL FIRE) - San Bernardino Unit*

David is the CAL FIRE San Bernardino Unit Forester. As the Unit Forester he is responsible for management and supervision of the Resource Management Division in the State Responsibility Areas of San Bernardino, Inyo, and Mono Counties including: planning, development, and implementation of fuel reduction and prescribed fire projects; Forest Practice enforcement; Fire Prevention grant management, Departmental CEQA compliance, and forest health. He began his career with CAL FIRE in 2015 in the Urban and Community Forestry program as the Regional Urban Forester for Los Angeles and Ventura Counties. Prior to working for CAL FIRE, he was a forester for a private timber company in Tehama and Shasta counties. He is a Registered Professional Forester, a licensed Pest Control Advisor, and a Qualified Applicator.



Rorie Skei

*Chief Deputy Director, Santa Monica Mountains Conservancy
and Chief Deputy Executive Officer, Mountains Recreation &
Conservation Authority*

Rorie Skei has been involved in Southern California open space preservation and parkland issues for nearly 45 years. First active in Ventura County and Conejo Valley environmental issues, she was appointed by the City of Thousand Oaks as its representative on the Santa Monica Mountains Conservancy Advisory Committee in 1983, then by the County of Ventura as its designee to the Conservancy Board from 1984 through 1990, serving as its chair for two years and also as chair of the Mountains Recreation and Conservation Authority (MRCA), a joint powers agency of the Conservancy, Conejo Recreation and Park District, and the Rancho Simi Recreation and Park District. She joined the MRCA staff, 1990-1998, then transferred to Conservancy staff.

As Chief Deputy Director for the Santa Monica Mountains Conservancy, Ms. Skei oversees acquisition, park development, and watershed planning staff; partnerships with local, state, and federal governments; and resource protection of the approximately 80,000 acres of parkland that have been preserved for the public to date. She also serves ex officio as the Chief Deputy Executive Officer of the Mountains Recreation and Conservation Authority (MRCA),; and is Deputy Executive Officer for five other joint powers authorities in which the Conservancy is a member. She is a sworn park ranger with MRCA. Since 1981, she has been the appointed public member and is the current chairperson of the Conejo Open Space Conservation Agency, a joint powers agency between the City of Thousand Oaks and the Conejo Recreation and Park District.

She earned a B.A. in Biological Science at the University of California Santa Barbara, and an M.S. in Environmental Science from Cal State Dominguez Hills.

Ms. Skei has long been a California native plant enthusiast and has maintained her native garden in Thousand Oaks for many years.

www.smmmc.ca.gov

www.mrca.ca.gov



Ron Durbin

Chief of the Forestry Division, Los Angeles County Fire Department

Forestry Division Chief Ron Durbin has served nearly 24 years with the LA County Fire Department, Prevention Services Bureau. He's protected countless homes and homeowners, helping them gain defensible space in compliance with fuel modification and brush Clearance Fire Codes.

Beyond his official role, Durbin's desire to build LA's safety can be seen in his service as the co-chair of the Santa Monica Mountains Fire-Safe Alliance with the Third District Board of Supervisors Office and membership in the LA County Planning Commission's Environmental Review Board (ERB) for the Local Coastal Program (LCP).

Chief Durbin holds masters degrees landscape architecture (MLA), business administration (MBA), and management and leadership (MSML). He also earned a bachelor of science in landscape architecture (BSLA) and is licensed by the California Board of Forestry as a Registered Professional Forester (RPF #2971) and Certified Arborist (WE-4238A).



Dania Gutierrez

Southern California Program Manager, National Forest Foundation

Dania Gutierrez joined the NFF in February 2019 as the California Program Manager in Southern California. She works closely with Southern California National Forest Units to develop program goals, foster relationships with community stakeholders, and oversee the implementation of key restoration and recreation projects. Prior to joining NFF, Dania worked for the LA Better Buildings Challenge and the Green Sports Alliance where she brought together key stakeholders to develop strategies and programs that encourage sustainable business practices at the intersection of the public and private sector. Dania has an MS in Natural Resources and Environment from the University of Michigan, and a BS in Wildlife Conservation from the University of Florida.

<https://www.nationalforests.org/regional-programs/california-program/southern-california-forest-fund>



Jerry Perez, Esq.

Forest Supervisor, Angeles National Forest, USDA Forest Service

Jerome “Jerry” Perez is currently the Forest Supervisor of the Angeles National Forest arriving to southern California in October 2018. Prior to that Perez served as the State Director for the Bureau of Land Management (BLM) in California January 2016-October 2018 and State Director for the BLM Oregon/Washington Office (2012-2015). Before his career with the BLM, Perez worked for the U.S. Forest Service in a number of positions that include Deputy Regional Forester for the Intermountain Region in Utah; Forest Supervisor on the Daniel Boone National Forest in Kentucky; Deputy Forest Supervisor for the Stanislaus National Forest in California; and National Litigation Coordinator in the U.S. Forest Service Headquarters in Washington, D.C. Perez graduated from West Virginia University with a bachelor’s degree in Forest Resource Management. He received his law degree from The Catholic University of America’s Columbus School of Law. Perez also served as a Peace Corps Volunteer (PCV) in Ghana, Africa (1989-1991) where he met his wife Rita who also was serving as a PCV. He and his wife Rita have been married for 27 years.



Van Butsic, Ph.D.

Cooperative Extension Specialist in Land Use, University of California Berkeley

Dr. Van Butsic is an interdisciplinary scientist who uses tools from economics, remote sensing, and land system science to conduct quantitative research to understand how land use and environmental policy impacts both humans and nature. Currently, much of his work focuses on using big data and quasi-experimental econometric techniques to quantify causal effects of policy by building valid counterfactual scenarios. At Berkeley, he is the Co-director of the Cannabis Research Center and an adjunct fellow at the Public Policy Institute of California. He has a BS from Reed College in Economics, and an M.S in Agricultural Economics and PhD in Forestry, both from the University of Wisconsin.

[Luclab.berkeley.edu](https://luclab.berkeley.edu)

PANEL 2 DISCUSSION & PRESENTATIONS



PANEL 2 DISCUSSION & PRESENTATIONS



MODERATOR

Michele Romolini, Ph.D., Managing Director, Center for Urban Resilience - Loyola Marymount University



WILDFIRE PROJECT MANAGEMENT

Rachel Lupo, Senior Manager at Southern California Edison (SCE) Wildfire Program - Project Management and Execution



LESSONS LEARNED FROM WILDFIRE AND BUILDING A MORE RESILIENT WATER SYSTEM

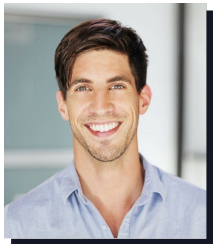
David W. Pederson, P.E., General Manager, Las Virgenes MWD

PANEL 2 DISCUSSION & PRESENTATIONS



LEVERAGING THE GREEN BUILDING COMMUNITY TO REDUCE FIRE RISK

Ben Stapleton, Executive Director, U.S. Green Building Council - Los Angeles



IDENTIFYING COMMUNITY VULNERABILITIES TO WILDFIRE THROUGH A HOME EVALUATION PROGRAM

Antoine Kunsch, Community Resilience Coordinator, Resource Conservation District of the Santa Monica Mountains



PREPARING COMMUNITIES FOR WILDFIRE RESILIENCE

Sabrina Drill, Ph.D., Natural Resources Advisor - Los Angeles and Ventura Counties, University of California Agriculture and Natural Resources

PANEL 2 DISCUSSION & PRESENTATIONS



SHARED STEWARDSHIP: WORKING COLLABORATIVELY TO IMPROVE FOREST HEALTH AND RESILIENCY ACROSS LANDSCAPES

Fabian Garcia, Partnership Coordinator, Angeles National Forest & San Gabriel Mountains National Monument



Michele Romolini, Ph.D.

Managing Director, Center for Urban Resilience - Loyola Marymount University

Dr. Michele Romolini specializes in social scientific research related to urban ecology, with main areas of expertise in environmental governance and green infrastructure. As CURES' Managing Director, she works to develop new research collaborations, secure funding for projects, and integrate social and ecological research questions. Dr. Romolini leads three main projects:

- LA Stew-MAP, a project to inventory and map the environmental stewardship activities conducted by organizations in Los Angeles.
- LA Tree Canopy Assessment and Prioritization Project, a collaboration with University of Vermont and Savatree that uses fine resolution imagery and LiDAR data to produce parcel-level analyses of existing and possible tree canopy
- Baldwin Hills Park User Study, a longitudinal analysis of park user behavior and attitudes.

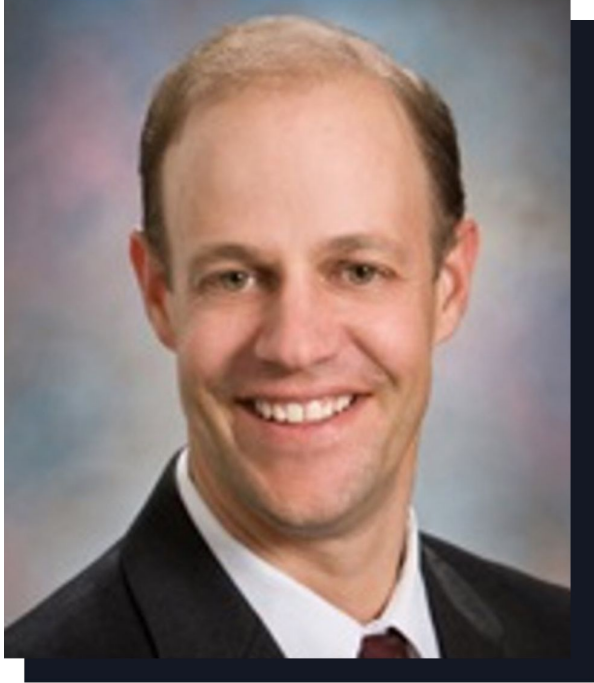
She works closely with faculty at LMU and other universities, USDA Forest Service scientists, and non-profit leaders. She received her PhD in Natural Resources at the University of Vermont, and a Master's of Environmental Studies and BA in Biology at the University of Pennsylvania. Cures.lmu.edu



Rachel Lupo

Senior Manager at Southern California Edison (SCE) Wildfire Program - Project Management and Execution

Rachel Lupo is currently the Senior Manager of the Wildfire Program Management team at Southern California Edison. She is responsible to oversee the project management of the wildfire mitigation and system hardening work from inception through execution in the field. This portfolio of work comprises approximately \$600M of the company's \$2.3B annual distribution budget. Prior to this, she held various positions in the emergency planning and distribution organizations. She received a B.A. in Criminal Justice Administration from Sonoma State University and Master of Science in National Security and Public Safety from University of New Haven. She serves on several external committees including Edison Electric Institute and Western Energy Institute. She is a board member of Southern California Edison Women's Roundtable and a program member of SCE's Diversity and Inclusion Program.



David W. Pederson, P.E.

General Manager, Las Virgenes MWD

David Pedersen is the General Manager of Las Virgenes Municipal Water District and Administering Agent for the Las Virgenes-Triunfo Joint Powers Authority. In these roles, he serves as the chief executive responsible providing water and sanitation services to residents of the Conejo/Las Virgenes Valleys. Dave has a Bachelor's Degree in Civil Engineering from the University of California, Irvine and a Master's Degree in Business Administration from the California State University, Long Beach. He serves on the Boards of the Association of California Water Agencies, WaterReuse California, Southern California Water Coalition and Urban Water Institute.

www.lvmwd.com



Ben Stapleton

Executive Director, U.S. Green Building Council - Los Angeles

Ben Stapleton is an LA native who brings a creative mind and consultative approach to a wide range of projects with a focus on building teams and designing programs to deliver impactful results. His current work is based on coordinating an ecosystem leveraging the built environment as the entry point and connective fabric to help create a more sustainable society for all as Executive Director for the U.S. Green Building Council - Los Angeles.

He launched and then managed the La Kretz Innovation Campus in Downtown LA while leading operations, finance, and major program initiatives for the LA Cleantech Incubator (LACI). The Campus has become an epicenter for sustainability in the region and an iconic green building for the LADWP and the City of LA, featuring events with prominent thought leaders, while being home to a community of cutting-edge businesses and nonprofits. During his time at LACI, the team worked with 80+ companies to raise \$225M+ in funding, create 1,800+ jobs, and deliver \$400M+ in long-term economic value for the City of LA.

His other work has included real estate advisory, energy efficiency consulting, facilities operations, site selection, and project management as well as business and strategy development for a wide range of companies and real estate investors. His talents and insight have proven invaluable in managing, negotiating, and executing on complex real estate projects while delivering technology startups and community engagement programs that exceed expectations.

He is a recipient of JLL's distinctive Da Vinci Award for Innovation, the Los Angeles Business Council's Community Impact Award, Stratiscope's Impact Maker to Watch Award, and CoStar's Power Broker designation in the Los Angeles market. He also served as the Managing Director for the Department of Energy (DOE) affiliated LA Better Buildings Challenge, launching the program and growing participation to over 60M square feet of commercial buildings.

www.usgbc-la.org



Antoine Kunsch

Community Resilience Coordinator, Resource Conservation District of the Santa Monica Mountains

Antoine Kunsch is the Community Resilience Coordinator of the Resource Conservation District of the Santa Monica Mountains and a Doctoral Candidate in Environmental Science and Engineering at the UCLA Institute of the Environment and Sustainability. Antoine led a multi-agency collaboration that resulted in the publication of defensiblespace.org, a new platform for eco-appropriate homescaping for wildfire resilience featuring best practices in home hardening and fire-wise landscaping. His research focuses on reducing wildfire risk in wildland-urban interface communities of Southern California through education and community organization.

www.rcdsgmm.org



Sabrina Drill, Ph.D.

*Natural Resources Advisor - Los Angeles and Ventura Counties,
University of California Agriculture and Natural Resources*

Sabrina Drill is the Urban Natural Resources Advisor for University of California Cooperative Extension in Los Angeles County. She helps diverse communities get, understand, and co-generate scientific information to restore urban streams and habitats, manage wildland fire, flooding, and invasive species, and use urban nature to increase both ecological and social resilience to extreme weather and climate change. She has previously worked in the Colorado and Hudson Rivers and nearshore Cape Cod in the US, and in the East African Great Lakes. She holds a Ph.D in Geography and a Master's in Biology from UCLA.

http://celosangeles.ucanr.edu/Natural_Resources/



Fabian Garcia

Partnership Coordinator, Angeles National Forest & San Gabriel Mountains National Monument

Fabian Garcia serves as the Partnership Coordinator for the Angeles National Forest where he leverages relationships to engage partners and the public toward the shared stewardship of public lands. He has worked with the US Forest Service, Pacific Southwest Region for over 15 years, having begun his career doing youth outreach in diverse communities in central and southern California.

LET'S STAY CONNECTED!

www.watershedhealth.org/2021-wildfire-symposium



WILDFIRE

WEATHER | WATER | WEEDS | WILDLIFE

DAY 1 - Thurs. Sept. 16, 9am-12pm

DAY 2 - Thurs. Sept. 30, 9am-12pm

DAY 3 - Thurs. Oct. 14, 2pm-5:30pm



COUNCIL FOR
WATERSHED HEALTH

Supported by **UNIVERSITY OF CALIFORNIA**
Agriculture and Natural Resources

THANK YOU SYMPOSIUM PARTNERS & SPONSORS!

SYMPOSIUM PARTNERS



FIRE POPPY



SCARLET LARKSPUR



Our sponsor levels are named after wildflowers that grow abundantly following a fire!