

2020 CALENDAR

LANDSCAPING

Lightly



2020

January

1 2 3 4
5 6 7 8 9 10 11
12 13 14 15 16 17 18
19 20 21 22 23 24 25
26 27 28 29 30 31

February

1
2 3 4 5 6 7 8
9 10 11 12 13 14 15
16 17 18 19 20 21 22
23 24 25 26 27 28 29

March

1 2 3 4 5 6 7
8 9 10 11 12 13 14
15 16 17 18 19 20 21
22 23 24 25 26 27 28
29 30 31

April

1 2 3 4
5 6 7 8 9 10 11
12 13 14 15 16 17 18
19 20 21 22 23 24 25
26 27 28 29 30

May

1 2
3 4 5 6 7 8 9
10 11 12 13 14 15 16
17 18 19 20 21 22 23
24 25 26 27 28 29 30
31

June

1 2 3 4 5 6
7 8 9 10 11 12 13
14 15 16 17 18 19 20
21 22 23 24 25 26 27
28 29 30

July

1 2 3 4
5 6 7 8 9 10 11
12 13 14 15 16 17 18
19 20 21 22 23 24 25
26 27 28 29 30 31

August

1
2 3 4 5 6 7 8
9 10 11 12 13 14 15
16 17 18 19 20 21 22
23 24 25 26 27 28 29
30 31

September

1 2 3 4 5
6 7 8 9 10 11 12
13 14 15 16 17 18 19
20 21 22 23 24 25 26
27 28 29 30

October

1 2 3
4 5 6 7 8 9 10
11 12 13 14 15 16 17
18 19 20 21 22 23 24
25 26 27 28 29 30 31

November

1 2 3 4 5 6 7
8 9 10 11 12 13 14
15 16 17 18 19 20 21
22 23 24 25 26 27 28
29 30

December

1 2 3 4 5
6 7 8 9 10 11 12
13 14 15 16 17 18 19
20 21 22 23 24 25 26
27 28 29 30 31

Dear Friend,

What a Watershed moment this is! The Los Angeles Safe, Clean Water Program passed by voters is kicking off in 2020! This will be the inaugural year of funding that will result in the development of nature-based stormwater improvement projects throughout Los Angeles County.

We celebrate the good work of our partners at the County Department of Public Works Flood Control District and the many advocates in OurWaterLA who made passage of the Safe Clean Water Program a reality. Dorothy Green founded Council for Watershed Health to clean up our rivers and ocean and promote more efficient and sustainable use of rainfall and stormwater. We can only imagine how she would have celebrated this news.

From our very humble beginnings, the Council has worked to convene agencies and organizations, to build consensus and inspire us all to break out of our silos to share and collaborate. The Council is steadfast in its commitment to provide leadership, guidance, and technical assistance to stakeholders ensuring our watershed efforts are coordinated and that stormwater projects are monitored, measured, tracked, shared and yes, celebrated.

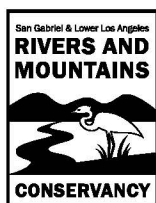
Among these reasons for celebration is this calendar and another year of wonderful artwork from our friend Edward Lum. Every year, Ed seeks to understand the subject matter before diving into the artwork, and again – his keen interest and artistry shine in this year’s calendar. There are three new scenes in this edition along with some of our most popular artwork from the past. We hope you enjoy it. We would like to thank Mr. Lum for eight years of charming and informative Landscaping Lightly Calendar illustrations.

From all of us at Council for Watershed Health, we wish you a happy and healthy 2020!

Sincerely,



Eileen Alduenda
Executive Director | Council for Watershed Health



HARVEST THE RAIN



PROTECT OUR RIVERS

Tips

Harvesting the rain is a great way to keep polluted stormwater out of our rivers and oceans. By collecting and using rainwater in your landscape you can help the planet and lower your water bill!

Use rain barrels attached to your rain gutters to collect rain for later use. Be sure to use the collected water regularly; average-sized rain barrels can fill quickly even in small storms.

A 1000 square foot rooftop in Los Angeles produces on average more than 9000 gallons of water annually. For larger landscapes, consider using cisterns to store rainwater to use year-round! Visit <http://www.treepeople.org/diy> for more information.

Collect rain water from your roof by using rain gutters and directing your downspouts into designated areas of your garden.

Sponsored by



JANUARY 2020

Sunday	Monday	Tuesday	Wednesday	Thursday	Friday	Saturday
DEC 2019 S M T W T F S 1 2 3 4 5 6 7 8 9 10 11 12 13 14 15 16 17 18 19 20 21 22 23 24 25 26 27 28 29 30 31	FEB 2020 S M T W T F S 1 2 3 4 5 6 7 8 9 10 11 12 13 14 15 16 17 18 19 20 21 22 23 24 25 26 27 28 29		1 New Year's Day	2	3	4
5	6	7	8	9	10	11
12	13	14	15	16	17	18
19	20 Martin Luther King Jr.'s Birthday	21	22	23	24	25 Chinese New Year
26	27	28	29	30	31	

RECYCLE THE RAIN



SLOW IT, SPREAD IT, SINK IT

Tips

Slow it down, spread it out, and sink it in! Keep stormwater from polluting streams and the ocean by creating areas where rainwater can soak into your landscape.

Swales are u-shaped basins in your landscape that capture rain, preventing it from flowing down streets and picking up pollution. Visit the Council for Watershed Health’s demonstration green street and alley at Elmer Avenue for ideas (tinyurl.com/GreeningElmer).

The first step is to find out if your soils allow water to quickly soak in. Perform a soil infiltration test by following the instructions in this Rainwater

Harvesting Homeowner’s “How To” Guide (tinyurl.com/rainwaterhowto).

The Safe Clean Water Program provides cost saving incentives for removing paved surfaces and replacing them with sustainable landscapes. Visit WaterforLA.com for further information on where our water comes from, its connection to rivers and lakes upstream and how our actions can benefit our region.



Created in partnership with

FEBRUARY 2020

Sunday	Monday	Tuesday	Wednesday	Thursday	Friday	Saturday
JAN 2020 S M T W T F S 1 2 3 4 5 6 7 8 9 10 11 12 13 14 15 16 17 18 19 20 21 22 23 24 25 26 27 28 29 30 31	MAR 2020 S M T W T F S 1 2 3 4 5 6 7 8 9 10 11 12 13 14 15 16 17 18 19 20 21 22 23 24 25 26 27 28 29 30 31					1
2 Groundhog Day	3	4	5	6	7	8
9	10	11	12	13	14 Valentine’s Day	15
16	17 President’s Day	18	19	20	21	22
23	24	25	26	27	28	29

GROW NATIVE



MONARCHS NEED MILKWEED

Tips

Monarch butterflies are in jeopardy. In Western North America they are at the lowest level ever recorded.

Making room in your garden for monarchs is easy.

Grow California native plants that attract pollinators with their nectar. You can find a great list of nectar plants online at: www.xerces.org/pollinator-conservation/plant-lists.

Another way to support butterflies in your yard is to include plants that Monarch butterflies use to lay their eggs and caterpillars will use to eat.

To learn more about growing California native milkweeds, visit: <https://xerces.org/milkweed>.

Only use native milkweeds and avoid non-native and tropical milkweed plants as they can harm Monarch butterflies and their larvae. You can find milkweed and other host and nectar providing plants for monarchs and other butterflies that are local to your area by using the advanced search on the www.cal scape.org and in this terrific article from our friends at the Theodore Payne Foundation: www.theodorepayne.org/beyond-milkweed-more-plants-for-monarchs.

MARCH 2020

Sunday	Monday	Tuesday	Wednesday	Thursday	Friday	Saturday
1	2	3	4	5	6	7
8	9	10	11	12	13	14
Daylight Savings						
15	16	17	18	19	20	21
		St. Patrick's Day		First Day of Spring		
22	23	24	25	26	27	28
			Mardi Gras			
29	30	31				
		Cesar Chavez Day				
					FEB 2020 S M T W T F S 1 2 3 4 5 6 7 8 9 10 11 12 13 14 15 16 17 18 19 20 21 22 23 24 25 26 27 28 29	APR 2020 S M T W T F S 1 2 3 4 5 6 7 8 9 10 11 12 13 14 15 16 17 18 19 20 21 22 23 24 25 26 27 28 29 30

MOBILIZE AGAINST MOSQUITOES



FIND, DRAIN AND DUMP WATER WEEKLY

Tips

There are new mosquitoes in Southern California called invasive Aedes mosquitoes that bite during the day and have the potential to transmit diseases like Zika, dengue, yellow fever, and chikungunya. It's now more important than ever to inspect your yard weekly, and dump any standing water that you find.

Aedes mosquitoes were introduced just a few years ago and they are now thriving in our neighborhoods. Standing water in backyards, old tires, gutters, rain barrels, toys, buckets, ponds, improperly maintained pools, and storm drains can act as breeding areas. They will breed in something as small as a bottle cap.

In ponds, fountains, bird baths or pools where water is not moving or filtered, use mosquito dunks that contain the biological mosquito control agent called Bti. Bti is natural and kills mosquito larvae but is harmless to wildlife and pets.

Studies have shown that mosquitoes are part of the diet of some birds, bats, frogs, lizards and dragonflies. Plant native plants to create habitat for these mosquito eaters.

Sponsored by



APRIL 2020

Sunday	Monday	Tuesday	Wednesday	Thursday	Friday	Saturday
MAR 2020 S M T W T F S 1 2 3 4 5 6 7 8 9 10 11 12 13 14 15 16 17 18 19 20 21 22 23 24 25 26 27 28 29 30 31	MAY 2020 S M T W T F S 1 2 3 4 5 6 7 8 9 10 11 12 13 14 15 16 17 18 19 20 21 22 23 24 25 26 27 28 29 30 31		1	2	3	4
5	6	7	8 First Day of Passover	9	10 Good Friday	11
12 Easter Sunday	13	14	15 Tax Day	16	17	18
19	20	21	22 Earth Day	23	24 Ramadan begins	25
CALIFORNIA MOSQUITO AWARENESS WEEK						
26	27	28	29	30		

SAVE YOUR SEEDS



COLLECTING, STORING, AND SHARING IS EASY

Tips

Saving seeds is a great way to save money, grow great plants, and connect with other gardeners in your community.

Seeds of California Native Plants can be saved and shared. Collecting, sowing and growing seeds from native annuals and perennials is a great way to keep your garden functioning and fresh. Visit www.wildflower.org/learn/collect-store-seeds to learn how.

Fruit and vegetable seed saving is a great way to explore the history of heirloom foods and the long tradition of preserving varieties that have proven successful in your garden.

By contributing to a local seed library, you can join a community of gardeners and share knowledge and resources. Visit the Seed Savers Exchange/Community Seed Resource Program for more information: communityseednetwork.org.

Seeds are a great way to get California native plants established in your yard, especially wildflowers. Remember native seeds generally germinate and sprout in the late Fall and early winter. During dry periods water your seeds gently once or twice a week until the next rains come. To purchase native plant seed, visit: www.theodorepayne.org/seed-program or www.larnerseeds.com.

MAY 2020

Sunday	Monday	Tuesday	Wednesday	Thursday	Friday	Saturday
APR 2020 S M T W T F S 1 2 3 4 5 6 7 8 9 10 11 12 13 14 15 16 17 18 19 20 21 22 23 24 25 26 27 28 29 30	JUN 2020 S M T W T F S 1 2 3 4 5 6 7 8 9 10 11 12 13 14 15 16 17 18 19 20 21 22 23 24 25 26 27 28 29 30				1	2
3	4	5	6	7	8	9
		Cinco de Mayo				
10	11	12	13	14	15	16
Mother's Day						
17	18	19	20	21	22	23
24	25	26	27	28	29	30
31	Memorial Day					

STALL 'TIL FALL

PLANT IN SEASON



Tips

Follow nature - Wait until November when temperatures fall and winter rains begin to install native plants.

Planting in the summer when the soil is hot and dry decreases your chances of a successful landscape. Who wants to buy plants twice due to poor planning??

Most drought-tolerant California native plants want winter water and flourish best when planted when soils are cooler and moister.

If turf is removed or landscape planning proceeds, use summer months to design the landscape, prepare soil, remove/control weeds, install hardscape (pathways, birdbaths) and stormwater infiltration features.

Begin shopping for your plant list at local native plant nurseries for purchase during the big fall plant sales.

Created in partnership with



JUNE 2020

Sunday	Monday	Tuesday	Wednesday	Thursday	Friday	Saturday																																																																																																																
	1	2	3	4	5	6																																																																																																																
7	8	9	10	11	12	13																																																																																																																
14	15	16	17	18	19	20																																																																																																																
Flag Day						First Day of Summer																																																																																																																
21	22	23	24	25	26	27																																																																																																																
Father's Day																																																																																																																						
28	29	30			<table border="1"> <thead> <tr> <th colspan="7">MAY 2020</th> <th colspan="7">JUL 2020</th> </tr> <tr> <th>S</th><th>M</th><th>T</th><th>W</th><th>T</th><th>F</th><th>S</th> <th>S</th><th>M</th><th>T</th><th>W</th><th>T</th><th>F</th><th>S</th> </tr> </thead> <tbody> <tr> <td></td><td></td><td></td><td></td><td>1</td><td>2</td><td></td> <td></td><td></td><td>1</td><td>2</td><td>3</td><td>4</td><td></td> </tr> <tr> <td>3</td><td>4</td><td>5</td><td>6</td><td>7</td><td>8</td><td>9</td> <td>5</td><td>6</td><td>7</td><td>8</td><td>9</td><td>10</td><td>11</td> </tr> <tr> <td>10</td><td>11</td><td>12</td><td>13</td><td>14</td><td>15</td><td>16</td> <td>12</td><td>13</td><td>14</td><td>15</td><td>16</td><td>17</td><td>18</td> </tr> <tr> <td>17</td><td>18</td><td>19</td><td>20</td><td>21</td><td>22</td><td>23</td> <td>19</td><td>20</td><td>21</td><td>22</td><td>23</td><td>24</td><td>25</td> </tr> <tr> <td>24</td><td>25</td><td>26</td><td>27</td><td>28</td><td>29</td><td>30</td> <td>26</td><td>27</td><td>28</td><td>29</td><td>30</td><td>31</td><td></td> </tr> <tr> <td></td><td></td><td></td><td></td><td></td><td></td><td>31</td> <td></td><td></td><td></td><td></td><td></td><td></td><td></td> </tr> </tbody> </table>		MAY 2020							JUL 2020							S	M	T	W	T	F	S	S	M	T	W	T	F	S					1	2				1	2	3	4		3	4	5	6	7	8	9	5	6	7	8	9	10	11	10	11	12	13	14	15	16	12	13	14	15	16	17	18	17	18	19	20	21	22	23	19	20	21	22	23	24	25	24	25	26	27	28	29	30	26	27	28	29	30	31								31							
MAY 2020							JUL 2020																																																																																																															
S	M	T	W	T	F	S	S	M	T	W	T	F	S																																																																																																									
				1	2				1	2	3	4																																																																																																										
3	4	5	6	7	8	9	5	6	7	8	9	10	11																																																																																																									
10	11	12	13	14	15	16	12	13	14	15	16	17	18																																																																																																									
17	18	19	20	21	22	23	19	20	21	22	23	24	25																																																																																																									
24	25	26	27	28	29	30	26	27	28	29	30	31																																																																																																										
						31																																																																																																																

LOVE YOUR GARDEN

VERY MULCH



Tips

Create a 2-4 inch blanket of inorganic (gravel) or organic (wood chips) mulch over the soil surface and around plants to conserve water, keep soil cool, suppress weeds, reduce compaction, and slowly make nitrogen and other nutrients available.

Mulch created from greenwaste includes wood chips, dried leaves and twigs that are the result of tree pruning and landscape maintenance. This is readily available from many tree companies and many cities have free mulch available. By using this mulch you can reduce greenwaste that would otherwise be sent to the landfill. You can also create your own mulch by chipping and shredding

your own greenwaste. Avoid composting weeds and diseased plants that can spread and cause problems in your landscape.

Most native plants evolved with lean soils and DO NOT need fertilizer. Mulch slowly decomposes at the soil surface and releases nutrients at a rate that native plants can absorb. Keep mulch 6" from the base of your plants to keep them healthy; otherways mulch can keep too much soil moisture and cause root rot and and other disease.

Created in partnership with



JULY 2020

Sunday							Monday							Tuesday							Wednesday							Thursday							Friday							Saturday						
JUN 2020							AUG 2020														1							2							3							4						
S	M	T	W	T	F	S	S	M	T	W	T	F	S																																			
1	2	3	4	5	6							1																																				
7	8	9	10	11	12	13	2	3	4	5	6	7	8																																			
14	15	16	17	18	19	20	9	10	11	12	13	14	15																																			
21	22	23	24	25	26	27	16	17	18	19	20	21	22																																			
28	29	30					23	24	25	26	27	28	29																																			
							30	31																										Independence Day														
5							6							7							8							9							10							11						
12							13							14							15							16							17							18						
19							20							21							22							23							24							25						
26							27							28							29							30							31													

PUT PLANTS IN POTS



CONTAINERS MAKE GARDENS POSSIBLE FOR ALL

Tips

With the right soil, sun, water and food, most plants will thrive in pots on balconies and patios. Pots can be made of clay, plastic, cement, wood or fabric. Old buckets, totes, and trash cans with drainage holes work great, too.

In the summer heat, soil moisture should be checked on a weekly basis, while in the winter, plants may not need to be watered at all. Keep a close eye on your potted plants and watch for wilting leaves. This will give you an idea of how often between waterings you can wait each season.

Feeding plants in pots is important. If growing fruits and vegetables, organic composts and fertilizers can be added to the soil surface. Most native plants need no supplemental fertilizer. For many nitrogen-loving indoor plants, bi-annual applications of a granular slow release granular fertilizer or regular applications of a balanced liquid fertilizer with minor nutrients is recommended.

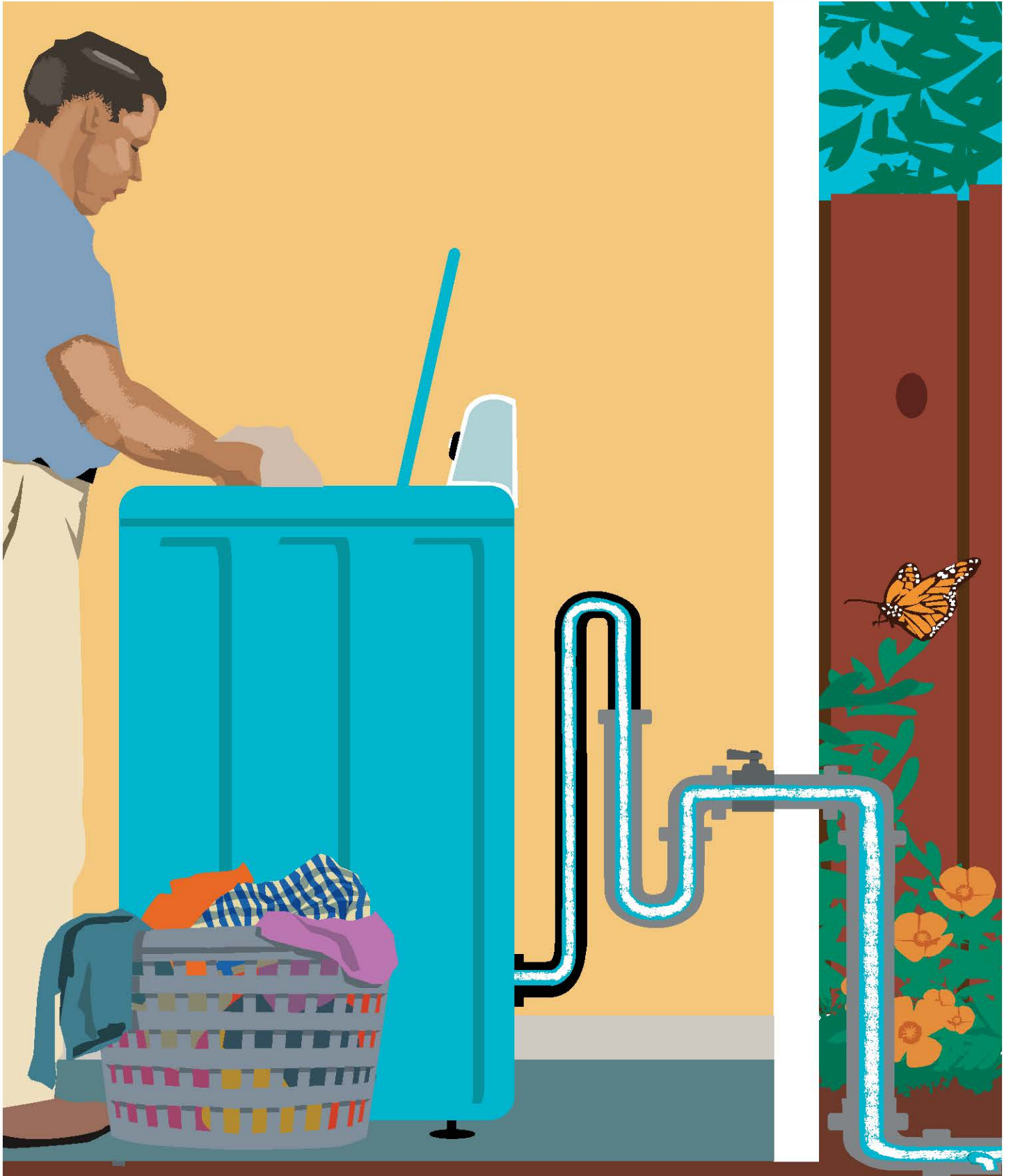
Sponsored by



AUGUST 2020

Sunday	Monday	Tuesday	Wednesday	Thursday	Friday	Saturday
JUL 2020 S M T W T F S 1 2 3 4 5 6 7 8 9 10 11 12 13 14 15 16 17 18 19 20 21 22 23 24 25 26 27 28 29 30 31	SEP 2020 S M T W T F S 1 2 3 4 5 6 7 8 9 10 11 12 13 14 15 16 17 18 19 20 21 22 23 24 25 26 27 28 29 30					1
2	3	4	5	6	7	8
9	10	11	12	13	14	15
16	17	18	19	20	21	22
23	24	25	26	27	28	29
30	31					

REUSE YOUR WATER



INSTALL A GREYWATER SYSTEM

Tips

Save water and money by using greywater to irrigate trees, shrubs, groundcovers and flower beds. Greywater is "wash water" from bathroom sinks, showers and washing machines.

Participate in a local workshop to learn about how to set up safe and approved greywater reuse systems. Visit www.greywateraction.org for more information.

Check current California Plumbing Code before moving forward with your plans. Permits are needed for some types of greywater systems. The current greywater code, Title 24, Part 5, Chapter 16 can be found at www.hcd.ca.gov.

Pay special attention to what's going down the drain! Use only detergents and cleaning products low in salts and free of boron. Your plants will thank you for it!

Created in partnership with



SEPTEMBER 2020

Sunday	Monday	Tuesday	Wednesday	Thursday	Friday	Saturday																																																																																																																
		1	2	3	4	5																																																																																																																
6	7 Labor Day	8	9	10	11	12																																																																																																																
13	14	15	16	17	18	19 Rosh Hashanah																																																																																																																
20	21	22 First Day of Autumn	23	24	25	26																																																																																																																
27 Yom Kippur	28	29	30		<table border="1"> <thead> <tr> <th colspan="7">AUG 2020</th> <th colspan="7">OCT 2020</th> </tr> <tr> <th>S</th><th>M</th><th>T</th><th>W</th><th>T</th><th>F</th><th>S</th> <th>S</th><th>M</th><th>T</th><th>W</th><th>T</th><th>F</th><th>S</th> </tr> </thead> <tbody> <tr> <td></td><td></td><td></td><td></td><td></td><td>1</td><td></td> <td></td><td></td><td></td><td></td><td>1</td><td>2</td><td>3</td> </tr> <tr> <td>2</td><td>3</td><td>4</td><td>5</td><td>6</td><td>7</td><td>8</td> <td>4</td><td>5</td><td>6</td><td>7</td><td>8</td><td>9</td><td>10</td> </tr> <tr> <td>9</td><td>10</td><td>11</td><td>12</td><td>13</td><td>14</td><td>15</td> <td>11</td><td>12</td><td>13</td><td>14</td><td>15</td><td>16</td><td>17</td> </tr> <tr> <td>16</td><td>17</td><td>18</td><td>19</td><td>20</td><td>21</td><td>22</td> <td>18</td><td>19</td><td>20</td><td>21</td><td>22</td><td>23</td><td>24</td> </tr> <tr> <td>23</td><td>24</td><td>25</td><td>26</td><td>27</td><td>28</td><td>29</td> <td>25</td><td>26</td><td>27</td><td>28</td><td>29</td><td>30</td><td>31</td> </tr> <tr> <td></td><td></td><td></td><td></td><td></td><td></td><td>30</td> <td>30</td><td>31</td><td></td><td></td><td></td><td></td><td></td> </tr> </tbody> </table>		AUG 2020							OCT 2020							S	M	T	W	T	F	S	S	M	T	W	T	F	S						1						1	2	3	2	3	4	5	6	7	8	4	5	6	7	8	9	10	9	10	11	12	13	14	15	11	12	13	14	15	16	17	16	17	18	19	20	21	22	18	19	20	21	22	23	24	23	24	25	26	27	28	29	25	26	27	28	29	30	31							30	30	31					
AUG 2020							OCT 2020																																																																																																															
S	M	T	W	T	F	S	S	M	T	W	T	F	S																																																																																																									
					1						1	2	3																																																																																																									
2	3	4	5	6	7	8	4	5	6	7	8	9	10																																																																																																									
9	10	11	12	13	14	15	11	12	13	14	15	16	17																																																																																																									
16	17	18	19	20	21	22	18	19	20	21	22	23	24																																																																																																									
23	24	25	26	27	28	29	25	26	27	28	29	30	31																																																																																																									
						30	30	31																																																																																																														

STAY FIRE SAFE



PROTECT YOUR HOME FROM WILDFIRES

Tips

If you live in a fire hazard area, learn how to create fire resistant structures and maintain a defensible space around your home. Visit www.ucanr.edu/sites/fire/Landscaping for more info.

When landscaping, consult with your local fire department to make sure that your plant selection and spacing are fire safe.

Minimize flammable plants from within 30 feet of your house. Maintain individual trees and shrubs to keep them free of dead wood.

Create space between trees and shrubs located within 30-100 feet of your structure (200 feet if your local fire department requires it).

Regularly clean debris from your roof and gutters to keep blowing embers from igniting structures.

Start a local Fire Safe Council for your community to educate residents on how to protect their homes and neighborhoods from wildfire. Learn more about how you can join the over 100 Fire Safe Councils at www.cafiresafecouncil.org.

OCTOBER 2020

Sunday	Monday	Tuesday	Wednesday	Thursday	Friday	Saturday
SEP 2020 S M T W T F S 1 2 3 4 5 6 7 8 9 10 11 12 13 14 15 16 17 18 19 20 21 22 23 24 25 26 27 28 29 30	NOV 2020 S M T W T F S 1 2 3 4 5 6 7 8 9 10 11 12 13 14 15 16 17 18 19 20 21 22 23 24 25 26 27 28 29 30			1	2	3
4	5	6	7	8	9	10
11	12 Columbus Day	13	14	15	16	17
18	19	20	21	22	23	24
25	26	27	28	29	30	31 Halloween

CONSERVE OUR WATER GROW HEALTHY GARDENS



Tips

Water is a precious resource, so don't spray your pavement and always use a broom.

Fix leaky faucets and always use a shut-off nozzle attachment on hoses.

You can save on watering in your garden by redirecting your rain gutter downspouts into your garden or into cisterns. Properly stored rainwater can be used to water your garden after the rains stop.

When properly used, mulch and compost will reduce the need to water. Mulch or compost fallen leaves also to control weeds and provide nutrients to your plants.

Your lawn might be your biggest water-waster so consider taking advantage of rebates and replacing your lawn. There are many beautiful alternatives that use much less water, such as drought-tolerant trees and shrubs.

Grow fruits and vegetables for edible landscaping. And use mulch and micro irrigation to reduce the amount of water that fruit and vegetables require.

Sponsored by



NOVEMBER 2020

Sunday	Monday	Tuesday	Wednesday	Thursday	Friday	Saturday
1 <small>Daylight Savings Ends</small>	2	3 <small>Election Day</small>	4	5	6	7
8	9	10	11 <small>Veterans Day</small>	12	13	14
15	16	17	18	19	20	21
22	23	24	25	26 <small>Thanksgiving</small>	27	28
29	30				OCT 2020 <small>S M T W T F S</small> 1 2 3 4 5 6 7 8 9 10 11 12 13 14 15 16 17 18 19 20 21 22 23 24 25 26 27 28 29 30 31	DEC 2020 <small>S M T W T F S</small> 1 2 3 4 5 6 7 8 9 10 11 12 13 14 15 16 17 18 19 20 21 22 23 24 25 26 27 28 29 30 31

BIRDSCAPING



BRING BACK THE BIRDS

Tips

With limited natural areas left due to growing urban centers and neighborhoods, birds have restricted habitat.

By providing adequate shelter and nesting sites, "birdscaping" a yard can unite families with resident bird species in their area.

Main threats to California migratory bird species in residential neighborhoods are leaf-blowers, pest control chemicals, windows, tree and shrub trimming and cats. Migratory birds are especially susceptible because they need rest and to forage for food during migration.

Allowing for height in the yard with tall shrubs and trees keeps birds safe and protected, serves as resting area for migratory birds, and keeps them out of reach from cats and other threats.

The best way to attract native birds is to plant native shrubs, wildflowers and trees for roosting, foraging and shelter. To attract and feed hummingbirds, plant yellow, pink or red tubular flowers such as the California Fuchsia and Penstemon species.

Protect nesting birds! When pruning trees, be sure to follow LA Audubon's Bird-Friendly Tree Trimming Guide (www.laaudubon.org/resources).

DECEMBER 2020

Sunday	Monday	Tuesday	Wednesday	Thursday	Friday	Saturday
NOV 2020 S M T W T F S 1 2 3 4 5 6 7 8 9 10 11 12 13 14 15 16 17 18 19 20 21 22 23 24 25 26 27 28 29 30	JAN 2021 S M T W T F S 1 2 3 4 5 6 7 8 9 10 11 12 13 14 15 16 17 18 19 20 21 22 23 24 25 26 27 28 29 30 31	1	2	3	4	5
6	7	8	9	10	11 <small>First Day of Chanukah</small>	12
13	14	15	16	17	18	19
20	21 <small>First Day of Winter</small>	22	23	24	25 <small>Christmas Day</small>	26 <small>First Day of Kwanzaa</small>
27	28	29	30	31		

PLAN FOR PLAY



PLANT TREES FOR FUTURE GENERATIONS

Tips

To keep our urban forests diverse and healthy, plant California native trees like the coast live oak. Large native trees provide shelter, food, and habitat for native animals; they also make great play areas for children. Plant in the late fall or winter when cool weather will help ensure proper establishment.

Trim trees only when necessary and only when birds are not nesting. It is unlawful to needlessly destroy bird nests. See the Los Angeles Audubon Tree Trimming Guidelines: www.laaudubon.org/resources.

Hire reputable tree trimmers, and never top a tree; the resulting branches will be weak and the tree will become susceptible to high wind and pests & disease.

For a list of trees that are suitable to your region, visit the SelectTree App at selecttree.calpoly.edu. For a great list of trees suitable for our region visit: www.inlandvalleygardenplanner.org/plant-finder.

JANUARY 2021

Sunday	Monday	Tuesday	Wednesday	Thursday	Friday	Saturday
DEC 2020 S M T W T F S 1 2 3 4 5 6 7 8 9 10 11 12 13 14 15 16 17 18 19 20 21 22 23 24 25 26 27 28 29 30 31	FEB 2021 S M T W T F S 1 2 3 4 5 6 7 8 9 10 11 12 13 14 15 16 17 18 19 20 21 22 23 24 25 26 27 28				1	2
3	4	5	6	7	New Year's Day 8	9
10	11	12	13	14	15	16
17	18 Martin Luther King Jr.'s Birthday	19	20	21	22	23
24	25	26	27	28	29	30
31						

JANUARY - HARVEST THE RAIN

Greywater, Green Landscape: How to Install Simple Water-Saving Irrigation Systems book by *Laura Allen*

Rainwater Harvesting for Drylands and Beyond by *Brad Lancaster*
www.harvestingrainwater.com

Surfrider Foundation – Ocean Friendly Gardens
www.surfrider.org/programs/entry/ocean-friendly-gardens

FEBRUARY - RECYCLE THE RAIN

Elmer Avenue Neighborhood Retrofit: Demonstration Green Street & Alley
tinyurl.com/GreeningElmer

Water LA Strategies
www.waterla.org/strategies

Central Coastal Low Impact Development Initiative
centralcoastlidi.org

Water for LA - Stormwater Resources for Homeowners and Businesses
www.waterforla.com/resources/programs

Safe Clean Water Program: Tax Lookup and Appeals Tool
www.safecleanwaterla.org/resources/tools

MARCH - MAKE WAY FOR MONARCHS

Monarch Joint Venture
www.monarchjointventure.org

Western Monarch Milkweed Mapper
www.monarchmilkweedmapper.org

US Fish and Wildlife Service Save the Monarch
www.fws.gov/savethemonarch

APRIL - MOBILIZE AGAINST MOSQUITOES

Greater LA County Mosquito and Vector Control District
www.glacvcd.org

San Gabriel Valley Mosquito and Vector Control District
www.sgvmosquito.org

Summit Mosquito Control Dunks and Granules
www.summitchemical.com/mosquito

Tips for Creating Bat Habitat to Manage Mosquitos
www.nwf.org/en/Garden-for-Wildlife/Cover/Build-a-Bat-House

MAY - SAVE YOUR SEEDS

Seed Library of Los Angeles – Seed Library Branches
www.slola.org/branches/categories/healthy-tip

The Theodore Payne Seed & Bulb Program
www.theodorepayne.org/seed-program

The Complete Guide to Saving Seeds by *Cheryl Moore-Gough and Robert Gough*

SeedMatters
www.seedmatters.org

JUNE - STALL TILL FALL

Riverside-Corona Resource Conservation District - Wild About Natives
www.rcrcd.org/plants

California Native Plant Society – Grow Native Program
www.cnps.org/gardening

JULY - LOVE YOUR GARDEN VERY MULCH

City of Los Angeles - Bureau of Sanitation Free Mulch Give-Away
www.lacitysan.org

UC Master Gardener Program - The Importance of Mulch
www.youtube.com/watch?v=uFDqP_V4hcl

Bay Friendly Coalition Landscaping & Gardening Mulching Guide
www.ebmud.com/index.php/download_file/force/1300/1201/?Bay-Friendly-Landscaping-Guide-to-Mulch.pdf

Mother Nature's Backyard - Understanding Mulches
mother-natures-backyard.blogspot.com/2012/07/understanding-mulches_23.html

AUGUST - POT UP SOME PLANTS

Sunset Magazine – How to Grow Vegetables in Pots
www.sunset.com/garden/fruits-veggies/how-to-grow-veggies-in-pots

Yerba Buena Nursery – Container Gardening with Native Plants
www.yerbabuenanursery.com/container_gardening.phps

Weeding Wild Suburbia – Tips on Growing Natives in Containers
www.weedingwildsuburbia.com/my-tips-on-growing-natives-in-containers/

SEPTEMBER - REUSE YOUR WATER

Greywater Action
www.greywateraction.org

Greywater Harvesting – Brad Landcaster
www.harvestingrainwater.com/greywater-harvesting

Oasis Design
www.oasisdesign.net

OCTOBER - STAY FIRE SAFE

CalFire - Ready for Wildfire
www.readyforwildfire.org

County of Los Angeles Fire Department Forestry Division
fire.lacounty.gov/forestry-division/forestry-fuel-modification/

California Fire Safe Council
www.cafiresafecouncil.org

University of California Cooperative Extension - Fire Resources and Information
www.ucanr.edu/sites/fire/

California Native Plant Society - Fire Recovery Guide
www.cnps.org/give/priority-initiatives/fire-recovery

NOVEMBER - CONSERVE OUR WATER

Gardening in Los Angeles by Yvonne Savio
www.gardeninginla.net

Los Angeles Master Gardener Training Program
celosangeles.ucanr.edu/UC_Master_Gardener_Program

TreePeople – DIY Resources
www.treepeople.org/diy

DECEMBER - BIRDSCAPING

Audubon - Plants for Birds
www.audubon.org/plantsforbirds

Plants for Native California Birds
www.laspilitas.com/bird.htm

Search by Zipcode for Birds and Plants
www.audubon.org/native-plants

JANUARY 2021 - PLAN FOR PLAY

Center for Ecoliteracy
www.ecoliteracy.org

Children and Nature Network
www.childrenandnature.org

International Society of Arboriculture
www.treesaregood.org

North East Trees
www.northeasttrees.org

TreePeople
www.treepeople.org

Burn Safe Where You Are
www.dontmovefirewood.org

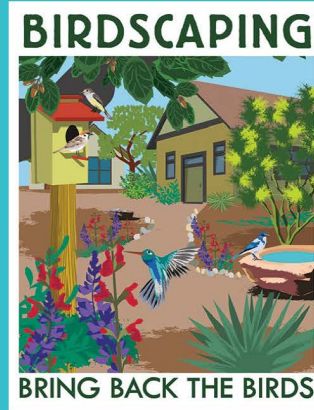
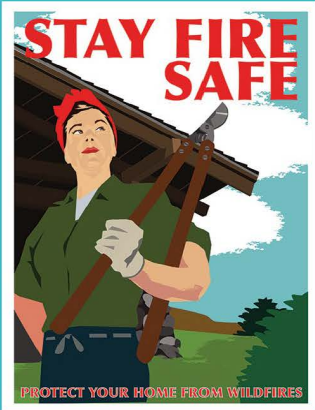
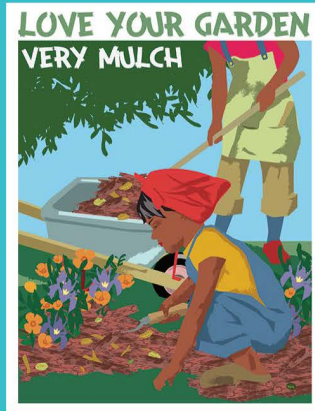
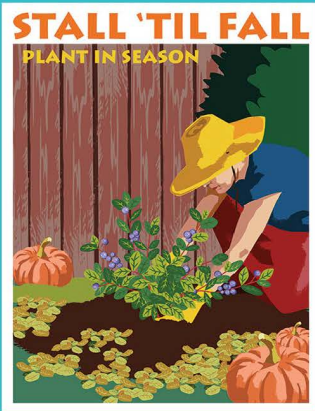
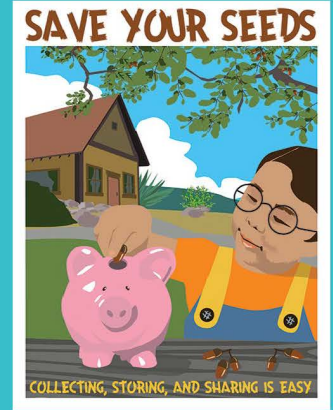
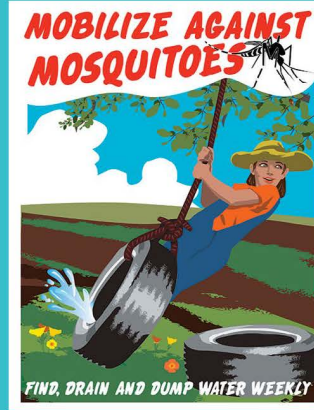
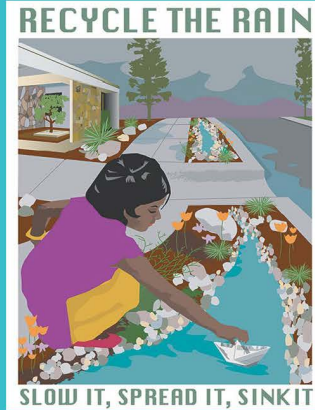
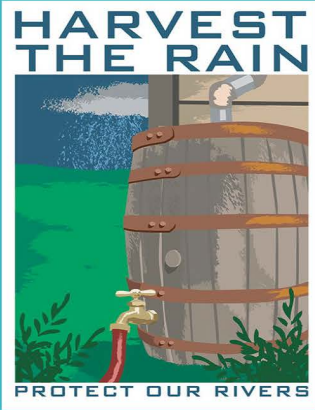
Edward Lum



ARTIST PROFILE

Ed Lum is a talented illustrator and painter whose work is reminiscent of early 20th Century travel posters and the Works Progress Administration (WPA) art of the 1930's. He was born in 1966, is a fourth generation Chinese-American, and works out of his studio at the historic Monterey Trailer Park in Los Angeles.

Check out www.funkyjunkfarms.com to see more of his work. Contact Ed: Edlum711@yahoo.com.



To print this calendar and pass it onto a friend, visit www.landscapinglightly.com.
 Questions and correspondence can be sent to info@watershedhealth.org.

